



Datasheet for ABIN1313456

OR14A16 Protein (AA 1-309) (GST tag)[Go to Product page](#)

1 Image

Overview

Quantity:	25 µg
Target:	OR14A16
Protein Characteristics:	AA 1-309
Origin:	Human
Source:	Wheat germ
Protein Type:	Recombinant
Purification tag / Conjugate:	This OR14A16 protein is labelled with GST tag.
Application:	ELISA, Western Blotting (WB), Affinity Purification (AP), Antibody Array (AA)

Product Details

Purpose:	OR14A16 (Human) Recombinant Protein (P01)
Sequence:	MANLTIVTEF ILMGFSTNKN MCILHSILFL LIYLCALMGN VLIIMITTLD HHLHTPVYFF LKNLSFLDLC LISVTAPKSI ANSLIHNSI SFLGCVSQVF LLLSSASAEL LLLTVMSFDR YTAICHPLHY DVIMDRSTCV QRATVSWLYG GLIAVMHTAG TFSLSYCGSN MVHQFFCDIP QLLAISCSN LIREIALILI NVVLDFFCFI VIIITYVHVF STVKKIPSTE GQSKAYSICL PHLLVWLFLS TGFIAYLKPA SESPSILDAV ISVFYTMLPP TFNPIIYSLR NKAIKVALGM LIKGLTKK
Characteristics:	Human OR14A16 full-length ORF (AAI48710.1, 1 a.a. - 309 a.a.) recombinant protein with GST-tag at N-terminal.
Purification:	in vitro wheat germ expression system

Target Details

Target:	OR14A16
Alternative Name:	OR14A16 (OR14A16 Products)
Background:	Full Gene Name: olfactory receptor, family 14, subfamily A, member 16 Synonyms: OR5AT1
Gene ID:	284532

Application Details

Application Notes:	Optimal working dilution should be determined by the investigator.
Comment:	Preparation method: in vitro, wheat germ expression system Product Quality tested by: 12.5% SDS-PAGE Stained with Coomassie Blue.
Restrictions:	For Research Use only

Handling

Buffer:	50 mM Tris-HCl, 10 mM reduced Glutathione, pH =8.0 in the elution buffer.
Handling Advice:	Aliquot to avoid repeated freezing and thawing.
Storage:	-80 °C
Storage Comment:	Best use within three months from the date of receipt of this protein.

Images

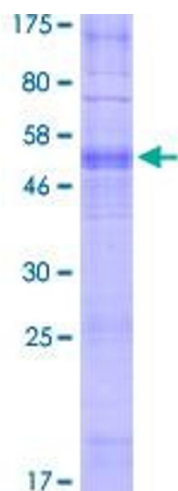


Image 1.