



Datasheet for ABIN1313457

OR14C36 Protein (AA 1-312) (GST tag)



[Go to Product page](#)

1 Image

Overview

Quantity:	25 µg
Target:	OR14C36
Protein Characteristics:	AA 1-312
Origin:	Human
Source:	Wheat germ
Protein Type:	Recombinant
Purification tag / Conjugate:	This OR14C36 protein is labelled with GST tag.
Application:	ELISA, Western Blotting (WB), Affinity Purification (AP), Antibody Array (AA)

Product Details

Purpose:	OR5BF1 (Human) Recombinant Protein (P01)
Sequence:	MPNSTTVMEF LLMRFSDVWT LQILHSASFF MLYLVTLMGN ILIVTVTTCD SSLHMPMYFF LRNLSILDAC YISVTVPTSC VNSLLDSTTI SKAGCVAQVF LVVFFVYVEL LFLTIMAHDR YVAVCQPLHY PVIVNSRICI QMTLASLLSG LVYAGMHTGS TFQLPFCRSN VIHQFFCDIP SLLKLSCSDT FSNEVMIVVS ALGVGGGCFI FIIRSYIHIF STVLGFPRGA DRTKAFSTCI PHILVSVFL SSCSSVYLRP PAIPAATQDL ILSGFYSIMP PLFNPIIYSL RNKQIKVAIK KIMKRIFYSE NV
Characteristics:	Human OR5BF1 full-length ORF (NP_001001918.1, 1 a.a. - 312 a.a.) recombinant protein with GST-tag at N-terminal.
Purification:	in vitro wheat germ expression system

Target Details

Target:	OR14C36
Alternative Name:	OR14C36 (OR14C36 Products)
Background:	Full Gene Name: olfactory receptor, family 14, subfamily C, member 36 Synonyms: OR5BF1
Gene ID:	127066
NCBI Accession:	NM_001001918

Application Details

Application Notes:	Optimal working dilution should be determined by the investigator.
Comment:	Preparation method: in vitro, wheat germ expression system Product Quality tested by: 12.5% SDS-PAGE Stained with Coomassie Blue.
Restrictions:	For Research Use only

Handling

Buffer:	50 mM Tris-HCl, 10 mM reduced Glutathione, pH =8.0 in the elution buffer.
Handling Advice:	Aliquot to avoid repeated freezing and thawing.
Storage:	-80 °C
Storage Comment:	Best use within three months from the date of receipt of this protein.

Images

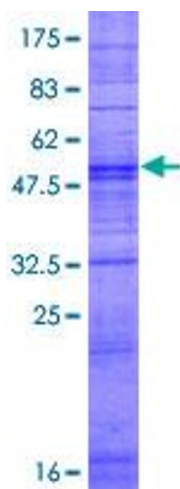


Image 1.