



[Go to Product page](#)

Datasheet for ABIN1313459

OR14J1 Protein (AA 1-321) (GST tag)

1 Image

Overview

Quantity:	25 µg
Target:	OR14J1
Protein Characteristics:	AA 1-321
Origin:	Human
Source:	Wheat germ
Protein Type:	Recombinant
Purification tag / Conjugate:	This OR14J1 protein is labelled with GST tag.
Application:	ELISA, Western Blotting (WB), Affinity Purification (AP), Antibody Array (AA)

Product Details

Purpose:	OR5U1 (Human) Recombinant Protein (P01)
Sequence:	MVNLTSMMSGF LLMGFSDERK LQILHALVFL VTYLLALTGN LLIITIITVD RRLHSPMYFF LKHLSLLDLC FISVTVPQSI ANSLMGNGYI SLVQCILQVF FFIALASSEV AILTVMSYDR YAAICQPLHY ETIMDPRACR HAVIAVWIAG GLSGLMHAAI NFSIPLCGKR VIHQFFCDVP QMLKLACSYE FINEIALAAF TTSAAFICLI SIVLSYIRIF STVLRIIPSAE GRTKVFSTCL PHLFVATFFL SAAGFEFLRL PSDSSSTVDL VFSVFYTVIP PTLNPVIYSL RNDSMKAALR KMLSKEELPQ RKMCLKAMFK L
Characteristics:	Human OR5U1 full-length ORF (NP_112208.1, 1 a.a. - 321 a.a.) recombinant protein with GST-tag at N-terminal.
Purification:	in vitro wheat germ expression system

Target Details

Target:	OR14J1
Alternative Name:	OR14J1 (OR14J1 Products)
Background:	Full Gene Name: olfactory receptor, family 14, subfamily J, member 1 Synonyms: OR5U1,OR6-25,bA150A6.4,hs6M1-28
Gene ID:	442191
NCBI Accession:	NM_030946

Application Details

Application Notes:	Optimal working dilution should be determined by the investigator.
Comment:	Preparation method: in vitro, wheat germ expression system Product Quality tested by: 12.5% SDS-PAGE Stained with Coomassie Blue.
Restrictions:	For Research Use only

Handling

Buffer:	50 mM Tris-HCl, 10 mM reduced Glutathione, pH =8.0 in the elution buffer.
Handling Advice:	Aliquot to avoid repeated freezing and thawing.
Storage:	-80 °C
Storage Comment:	Best use within three months from the date of receipt of this protein.

Images

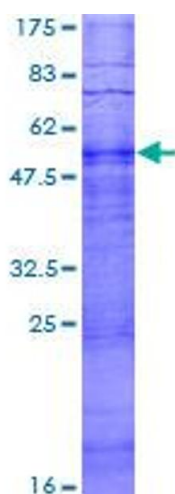


Image 1.