

Datasheet for ABIN1313460
OR1A1 Protein (AA 1-309) (GST tag)



[Go to Product page](#)

1 Image

Overview

Quantity:	10 µg
Target:	OR1A1
Protein Characteristics:	AA 1-309
Origin:	Human
Source:	Wheat germ
Protein Type:	Recombinant
Purification tag / Conjugate:	This OR1A1 protein is labelled with GST tag.
Application:	ELISA, Western Blotting (WB), Affinity Purification (AP), Antibody Array (AA)

Product Details

Purpose:	OR1A1 (Human) Recombinant Protein (P01)
Sequence:	MRENNQSSTL EFILLGVTGQ QEQEDFFYIL FLFIYPITLI GNLLIVLAIC SDVRLHNPMY FLLANLSLVD IFFSSVTIPK MLANHLLGSK SISFGGCLTQ MYFMIALGNT DSYILAAMAY DRAVAISRPL HYTTIMSPRS CIWLIAGSWV IGNANALPHT LLTASLSFCG NQEVANFYCD ITPLLKLSKS DIHFHVKMMY LGVGIFSVPL LCIIVSYIRV FSTVFQVPST KGVLKAFSTC GSHLTVVSLY YGTVMGTYFR PLTNYSLKDA VITVMYTAVT PMLNPFYISL RNRDMKAALR KLFNKRISS
Characteristics:	Human OR1A1 full-length ORF (NP_055380.1, 1 a.a. - 309 a.a.) recombinant protein with GST-tag at N-terminal.
Purification:	in vitro wheat germ expression system

Target Details

Target:	OR1A1
Alternative Name:	OR1A1 (OR1A1 Products)
Background:	Full Gene Name: olfactory receptor, family 1, subfamily A, member 1 Synonyms: OR17-7
Gene ID:	8383
NCBI Accession:	NM_014565

Application Details

Application Notes:	Optimal working dilution should be determined by the investigator.
Comment:	Preparation method: in vitro, wheat germ expression system Product Quality tested by: 12.5% SDS-PAGE Stained with Coomassie Blue.
Restrictions:	For Research Use only

Handling

Buffer:	50 mM Tris-HCl, 10 mM reduced Glutathione, pH =8.0 in the elution buffer.
Handling Advice:	Aliquot to avoid repeated freezing and thawing.
Storage:	-80 °C
Storage Comment:	Best use within three months from the date of receipt of this protein.

Images

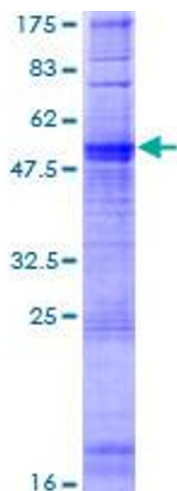


Image 1.