



[Go to Product page](#)

Datasheet for ABIN1313467

## OR1F1 Protein (AA 1-312) (GST tag)

### 1 Image

#### Overview

Quantity:	10 µg
Target:	OR1F1
Protein Characteristics:	AA 1-312
Origin:	Human
Source:	Wheat germ
Protein Type:	Recombinant
Purification tag / Conjugate:	This OR1F1 protein is labelled with GST tag.
Application:	ELISA, Western Blotting (WB), Affinity Purification (AP), Antibody Array (AA)

#### Product Details

Purpose:	OR1F1 (Human) Recombinant Protein (P01)
Sequence:	MSGTNQSSVS EFLLLGLSRQ PQQQHLLFVF FLSMYLATVL GNLLIILSVS IDSCLHTPMY FFLSNLSFVD ICFSFTTVPK MLANHILETQ TISFCGCLTQ MYFVFMFVDM DNFLAVMAY DHFVAVCHPL HYTAKMTHQL CALLVAGLWV VANLNVLLHT LLMAPLSFCA DNAITHFFCD VTPLLKLSCS DTHLNEVIL SEGALVMITP FLCILASYMH ITCTVLKVPS TKGRWKAFST CGSHLAVVLL FYSTIIAVYF NPLSSHSAEK DTMATVLYTV VTPMLNPFYIY SLRNRYLKGA LKKVVGRVVF SV
Characteristics:	Human OR1F1 full-length ORF ( NP_036492.1, 1 a.a. - 312 a.a.) recombinant protein with GST-tag at N-terminal.
Purification:	in vitro wheat germ expression system

## Target Details

Target:	OR1F1
Alternative Name:	OR1F1 ( <a href="#">OR1F1 Products</a> )
Background:	Full Gene Name: olfactory receptor, family 1, subfamily F, member 1 Synonyms: OLFMF,OR16-36,OR16-37,OR16-88,OR16-89,OR16-90,OR1F10,OR1F13P,OR1F4,OR1F5,OR1F6,OR1F7,OR1F8,OR1F9,OR3-145,ORL1023
Gene ID:	4992
NCBI Accession:	<a href="#">NM_012360</a>

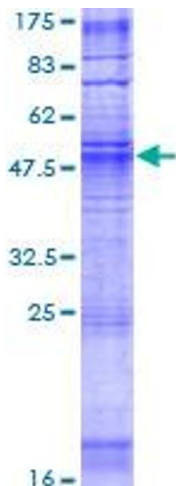
## Application Details

Application Notes:	Optimal working dilution should be determined by the investigator.
Comment:	Preparation method: in vitro, wheat germ expression system Product Quality tested by: 12.5% SDS-PAGE Stained with Coomassie Blue.
Restrictions:	For Research Use only

## Handling

Buffer:	50 mM Tris-HCl, 10 mM reduced Glutathione, pH =8.0 in the elution buffer.
Handling Advice:	Aliquot to avoid repeated freezing and thawing.
Storage:	-80 °C
Storage Comment:	Best use within three months from the date of receipt of this protein.

## Images



**Image 1.**