

Datasheet for ABIN1313469

OR111 Protein (AA 293-355) (GST tag)



[Go to Product page](#)

1 Image

Overview

Quantity:	10 µg
Target:	OR111
Protein Characteristics:	AA 293-355
Origin:	Human
Source:	Wheat germ
Protein Type:	Recombinant
Purification tag / Conjugate:	This OR111 protein is labelled with GST tag.
Application:	ELISA, Western Blotting (WB), Affinity Purification (AP), Antibody Array (AA)

Product Details

Purpose:	OR111 (Human) Recombinant Protein (Q01)
Sequence:	RNKDMKAALG KLIGKVAVPC PRPEQLLDVY HVPGSLLAAR DTEMHPIYP GGVQSLAGNR DME
Characteristics:	Human OR111 partial ORF (NP_001004713.1, 293 a.a. - 355 a.a.) recombinant protein with GST-tag at N-terminal.
Purification:	in vitro wheat germ expression system

Target Details

Target:	OR111
Alternative Name:	OR111 (OR111 Products)
Background:	Full Gene Name: olfactory receptor, family 1, subfamily I, member 1

Target Details

Synonyms: OR19-20,OR111P,OR111Q

Gene ID: 126370

NCBI Accession: [NM_001004713](#)

Application Details

Application Notes: Optimal working dilution should be determined by the investigator.

Comment: Preparation method: in vitro, wheat germ expression system
Product Quality tested by: 12.5% SDS-PAGE Stained with Coomassie Blue.

Restrictions: For Research Use only

Handling

Buffer: 50 mM Tris-HCl, 10 mM reduced Glutathione, pH =8.0 in the elution buffer.

Handling Advice: Aliquot to avoid repeated freezing and thawing.

Storage: -80 °C

Storage Comment: Best use within three months from the date of receipt of this protein.

Images

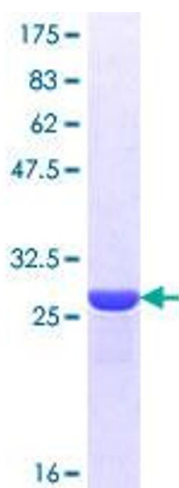


Image 1.