

Datasheet for ABIN1313472

## Olfactory Receptor, Family 1, Subfamily J, Member 2 (OR1J2) (AA 1-313) protein (GST tag)



[Go to Product page](#)

### 1 Image

#### Overview

Quantity:	25 µg
Target:	Olfactory Receptor, Family 1, Subfamily J, Member 2 (OR1J2)
Protein Characteristics:	AA 1-313
Origin:	Human
Source:	Wheat germ
Protein Type:	Recombinant
Purification tag / Conjugate:	GST tag
Application:	ELISA, Western Blotting (WB), Affinity Purification (AP), Antibody Array (AA)

#### Product Details

Purpose:	OR1J2 (Human) Recombinant Protein (P01)
Sequence:	MSPENQSSVS EFLLLGLPIR PEQQAVFFTL FLGMYLTTVL GNLLIMLLIQ LDSHLHTPMY FFLSHLALTD ISFSSVTVPK MLMDMRTKYK SILYEECISQ MYFFIFFTDL DSFLITSMAY DRYVAICHPL HYTVIMREEL CVFLVAVSWI LSCASSLSHT LLLTRLSFCA ANTIPHVFC LAALLKLSCS DIFLNELVMF TVGVVVITLP FMCILVSYGY IGATILRVPS TKGIIHKALST CGSHLSVVSL YYGSIFGQYL FPTVSSSIDK DVIIVALMYTV VTPMLNPFYI SLRNRDMKEA LGKLFSTRATF FSW
Characteristics:	Human OR1J2 full-length ORF ( NP_473448.1, 1 a.a. - 313 a.a.) recombinant protein with GST-tag at N-terminal.
Purification:	in vitro wheat germ expression system

## Target Details

Target:	Olfactory Receptor, Family 1, Subfamily J, Member 2 (OR1J2)
Alternative Name:	OR1J2 ( <a href="#">OR1J2 Products</a> )
Background:	Full Gene Name: olfactory receptor, family 1, subfamily J, member 2 Synonyms: FLJ16828,HG152,HSA5,OR1J3,OR1J5,OR9-19,OST044
Gene ID:	26740
NCBI Accession:	<a href="#">NM_054107</a>

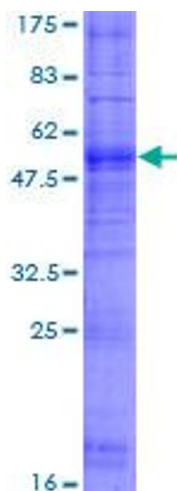
## Application Details

Application Notes:	Optimal working dilution should be determined by the investigator.
Comment:	Preparation method: in vitro, wheat germ expression system Product Quality tested by: 12.5% SDS-PAGE Stained with Coomassie Blue.
Restrictions:	For Research Use only

## Handling

Buffer:	50 mM Tris-HCl, 10 mM reduced Glutathione, pH =8.0 in the elution buffer.
Handling Advice:	Aliquot to avoid repeated freezing and thawing.
Storage:	-80 °C
Storage Comment:	Best use within three months from the date of receipt of this protein.

## Images



**Image 1.**