



[Go to Product page](#)

Datasheet for ABIN1313473

OR1M1 Protein (AA 1-313) (GST tag)

1 Image

Overview

Quantity:	25 µg
Target:	OR1M1
Protein Characteristics:	AA 1-313
Origin:	Human
Source:	Wheat germ
Protein Type:	Recombinant
Purification tag / Conjugate:	This OR1M1 protein is labelled with GST tag.
Application:	ELISA, Western Blotting (WB), Affinity Purification (AP), Antibody Array (AA)

Product Details

Purpose:	OR1M1 (Human) Recombinant Protein (P01)
Sequence:	MEPRNQTSAS QFILLGLSEK PEQETLLFSL FFCMYLVMVW GNLLIILAIS IDSHLHTPMY FFLANLSLVD FCLATNTIPK MLVSLQTGSK AISYPCCLIQ MYFFHFFGIV DSVIAMMAY DRFVAICHPL HYAKIMSLRL CRLLVGALWA FSCFISLTHI LLMARLVFCG SHEVPHYFCD LTPILRLSCT DTSVNRIFIL IVAGMVIATP FVCILASYAR ILVAIMKVPS AGGRKKAFST CSSHLSVAL FYGTTIGVYL CPSSVLTTVK EKASAVMYTA VTPMLNPFYI SLRNRDLKGA LRKLVNRKIT SSS
Characteristics:	Human OR1M1 full-length ORF (NP_001004456.1, 1 a.a. - 313 a.a.) recombinant protein with GST-tag at N-terminal.
Purification:	in vitro wheat germ expression system

Target Details

Target:	OR1M1
Alternative Name:	OR1M1 (OR1M1 Products)
Background:	Full Gene Name: olfactory receptor, family 1, subfamily M, member 1 Synonyms: OR19-5,OR19-6
Gene ID:	125963
NCBI Accession:	NM_001004456

Application Details

Application Notes:	Optimal working dilution should be determined by the investigator.
Comment:	Preparation method: in vitro, wheat germ expression system Product Quality tested by: 12.5% SDS-PAGE Stained with Coomassie Blue.
Restrictions:	For Research Use only

Handling

Buffer:	50 mM Tris-HCl, 10 mM reduced Glutathione, pH =8.0 in the elution buffer.
Handling Advice:	Aliquot to avoid repeated freezing and thawing.
Storage:	-80 °C
Storage Comment:	Best use within three months from the date of receipt of this protein.

Images

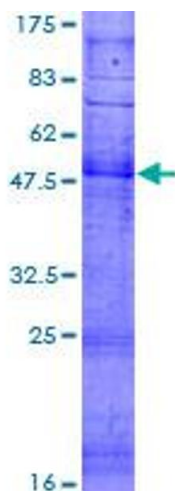


Image 1.