



[Go to Product page](#)

Datasheet for ABIN1313475

OR1Q1 Protein (AA 1-314) (GST tag)

1 Image

Overview

Quantity:	25 µg
Target:	OR1Q1
Protein Characteristics:	AA 1-314
Origin:	Human
Source:	Wheat germ
Protein Type:	Recombinant
Purification tag / Conjugate:	This OR1Q1 protein is labelled with GST tag.
Application:	ELISA, Western Blotting (WB), Affinity Purification (AP), Antibody Array (AA)

Product Details

Purpose:	OR1Q1 (Human) Recombinant Protein (P01)
Sequence:	MDNSNWTSVS HFVLLGISTH PEEQIPLFLV FSLMYAINIS GNLAITLIL SAPRLHIPMY IFLSNLALTD ICFTSTTVPK MLQIIFSPK VISYTGCLAQ TYFFICFAVM ENFILAVMAY DRYIAICHPF HYTMILTRML CVKMVVMCHA LSHLHAMLHT FLIGQLIFCA DNRIPHFFCD LYALMKISCT STYLNTLMIH TEGAVVISGA LAFITASYAC IILVVLRIIPS AKGRWKTFS CGSHLTVVAI FYGTLVWVYF RPLSSYSVTK GRIITVVYTV VTPMLNPFYI SLRNGDVKGG FMKWMSRMQT FFFR
Characteristics:	Human OR1Q1 full-length ORF (NP_036496.1, 1 a.a. - 314 a.a.) recombinant protein with GST-tag at N-terminal.
Purification:	in vitro wheat germ expression system

Target Details

Target:	OR1Q1
Alternative Name:	OR1Q1 (OR1Q1 Products)
Background:	Full Gene Name: olfactory receptor, family 1, subfamily Q, member 1 Synonyms: HSTPCR106,OR1Q2,OR1Q3,OR9-25,OR9-A,OST226,OST226OR9-A,TPCR106
Gene ID:	158131
NCBI Accession:	NM_012364

Application Details

Application Notes:	Optimal working dilution should be determined by the investigator.
Comment:	Preparation method: in vitro, wheat germ expression system Product Quality tested by: 12.5% SDS-PAGE Stained with Coomassie Blue.
Restrictions:	For Research Use only

Handling

Buffer:	50 mM Tris-HCl, 10 mM reduced Glutathione, pH =8.0 in the elution buffer.
Handling Advice:	Aliquot to avoid repeated freezing and thawing.
Storage:	-80 °C
Storage Comment:	Best use within three months from the date of receipt of this protein.

Images

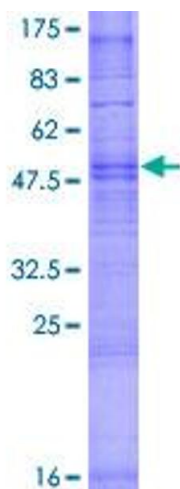


Image 1.