



[Go to Product page](#)

Datasheet for ABIN1313476

## OR1S2 Protein (AA 1-312) (GST tag)

### 1 Image

#### Overview

Quantity:	25 µg
Target:	OR1S2
Protein Characteristics:	AA 1-312
Origin:	Human
Source:	Wheat germ
Protein Type:	Recombinant
Purification tag / Conjugate:	This OR1S2 protein is labelled with GST tag.
Application:	ELISA, Western Blotting (WB), Affinity Purification (AP), Antibody Array (AA)

#### Product Details

Purpose:	OR1S2 (Human) Recombinant Protein (P01)
Sequence:	MHQENQTTIT EFILLGLSNQ AEHQNLLFVL FLSMYVVTVV GNGLIIVAIS LDIYLHTPMY LFLAYLSFAD ISSISNSVPK MLVNIQTNSQ SISYESCITQ MYFSIVFVVT DNLLLGTMAF DHFVAICHPL NYTTFMRARF GTLLTVISWF LSNIALTHT LLLIQLLFCFCD HNTLPHFFCD LAPLLKLSLCS DTMINELVLF IVGLSVIIFP FVLIFFSYVC IIRAVLGVSS TQGWKAFST CGSHLTIAL FYGTTVGVYF FPSSTHPEDT DKIGAVLFTV VTPMMNPFYI SLRNKDMKGA LRKLINRKIS SL
Characteristics:	Human OR1S2 full-length ORF ( Q8NGQ3, 1 a.a. - 312 a.a.) recombinant protein with GST-tag at N-terminal.
Purification:	in vitro wheat germ expression system

## Target Details

Target:	OR1S2
Alternative Name:	OR1S2 ( <a href="#">OR1S2 Products</a> )
Background:	Full Gene Name: olfactory receptor, family 1, subfamily S, member 2 Synonyms: OR11-231
Gene ID:	219958
UniProt:	<a href="#">Q8NGQ3</a>

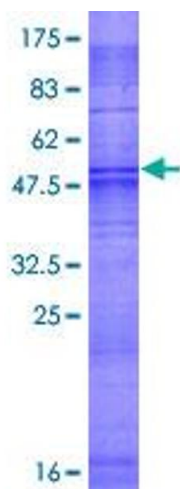
## Application Details

Application Notes:	Optimal working dilution should be determined by the investigator.
Comment:	Preparation method: in vitro, wheat germ expression system Product Quality tested by: 12.5% SDS-PAGE Stained with Coomassie Blue.
Restrictions:	For Research Use only

## Handling

Buffer:	50 mM Tris-HCl, 10 mM reduced Glutathione, pH =8.0 in the elution buffer.
Handling Advice:	Aliquot to avoid repeated freezing and thawing.
Storage:	-80 °C
Storage Comment:	Best use within three months from the date of receipt of this protein.

## Images



**Image 1.**