



[Go to Product page](#)

Datasheet for ABIN1313477

## OR2A1 Protein (AA 1-310) (GST tag)

### 1 Image

#### Overview

Quantity:	25 µg
Target:	OR2A1
Protein Characteristics:	AA 1-310
Origin:	Human
Source:	Wheat germ
Protein Type:	Recombinant
Purification tag / Conjugate:	This OR2A1 protein is labelled with GST tag.
Application:	Affinity Purification (AP), Antibody Array (AA), ELISA, Western Blotting (WB)

#### Product Details

Purpose:	OR2A1 (Human) Recombinant Protein (P01)
Sequence:	MGENQTMVTE FLLLGFLGFP RIQMLLFGLF SLFYIFTLLG NGAILGLISL DSRLHTPMYF FLSHLAVVDI AYTRNTVPQM LANLLHPAKP ISFAGCMTQT FLCLSFHSE CLLLVLMSYD RYVAICHPLR YSVIMTWRVC ITLAVTSWTC GLLALAHVV LILRLPFSGP HEINHHFCEI LSVLRACAD TWLNQVWIFA ACVFFLVGPP SLVLVSYSHI LAAILRIQSG EGRRKAFSTC SSHLCVVGLF FGSAILMYMA PKSRHPPEEQ KVFFLFYSFF NPTLNPLIYS LRNGEVKGAL RRALGKESHS
Characteristics:	Human OR2A1 full-length ORF ( NP_001005287.1, 1 a.a. - 310 a.a.) recombinant protein with GST-tag at N-terminal.
Purification:	in vitro wheat germ expression system

## Target Details

Target:	OR2A1
Alternative Name:	OR2A1 ( <a href="#">OR2A1 Products</a> )
Background:	Full Gene Name: olfactory receptor, family 2, subfamily A, member 1 Synonyms:
Gene ID:	346528
NCBI Accession:	<a href="#">NM_001005287</a>

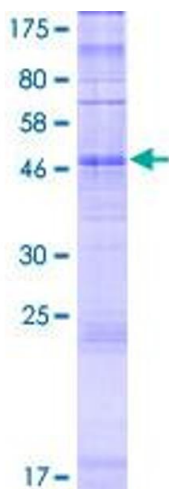
## Application Details

Application Notes:	Optimal working dilution should be determined by the investigator.
Comment:	Preparation method: in vitro, wheat germ expression system Product Quality tested by: 12.5% SDS-PAGE Stained with Coomassie Blue.
Restrictions:	For Research Use only

## Handling

Buffer:	50 mM Tris-HCl, 10 mM reduced Glutathione, pH =8.0 in the elution buffer.
Handling Advice:	Aliquot to avoid repeated freezing and thawing.
Storage:	-80 °C
Storage Comment:	Best use within three months from the date of receipt of this protein.

## Images



**Image 1.**