



[Go to Product page](#)

Datasheet for ABIN1313478

## OR2A12 Protein (AA 1-310) (GST tag)

### 1 Image

#### Overview

Quantity:	25 µg
Target:	OR2A12
Protein Characteristics:	AA 1-310
Origin:	Human
Source:	Wheat germ
Protein Type:	Recombinant
Purification tag / Conjugate:	This OR2A12 protein is labelled with GST tag.
Application:	ELISA, Western Blotting (WB), Affinity Purification (AP), Antibody Array (AA)

#### Product Details

Purpose:	OR2A12 (Human) Recombinant Protein (P01)
Sequence:	MESNQTWITE VILLGFQVDP ALELFLFGFF LLFYSLTLMG NGIILGLIYL DSRLHTPMYV FLSHLAIVDM SYASSTVPKM LANLVMHKKV ISFAPCILQT FLYLAFAITE CLILVMMCYD RYVAICHPLQ YTLIMNWRVC TVLASTCWIF SFLALVHIT LILRLPFCGP QKINHFFCQI MSVFKLACAD TRLNQVVLFA GSAFILVGPL CLVLVSYLHI LVAILRIQSG EGRRKAFSTC SSHLCVVGLF FGSAIVMYMA PKSSHSQERR KILSLFYSLF NPILNPLIYS LRNAE VKGAL KRVLWKQRSM
Characteristics:	Human OR2A12 full-length ORF ( NP_001004135.1, 1 a.a. - 310 a.a.) recombinant protein with GST-tag at N-terminal.
Purification:	in vitro wheat germ expression system

## Target Details

Target:	OR2A12
Alternative Name:	OR2A12 ( <a href="#">OR2A12 Products</a> )
Background:	Full Gene Name: olfactory receptor, family 2, subfamily A, member 12 Synonyms: OR2A12P,OR2A16P
Gene ID:	346525
NCBI Accession:	<a href="#">NM_001004135</a>

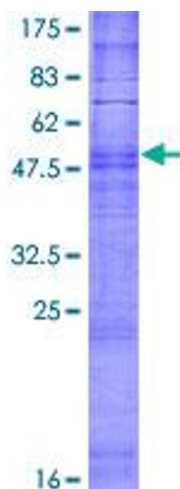
## Application Details

Application Notes:	Optimal working dilution should be determined by the investigator.
Comment:	Preparation method: in vitro, wheat germ expression system Product Quality tested by: 12.5% SDS-PAGE Stained with Coomassie Blue.
Restrictions:	For Research Use only

## Handling

Buffer:	50 mM Tris-HCl, 10 mM reduced Glutathione, pH =8.0 in the elution buffer.
Handling Advice:	Aliquot to avoid repeated freezing and thawing.
Storage:	-80 °C
Storage Comment:	Best use within three months from the date of receipt of this protein.

## Images



**Image 1.**