

Datasheet for ABIN1313479
OR2A2 Protein (AA 261-318) (GST tag)



[Go to Product page](#)

1 Image

Overview

Quantity:	10 µg
Target:	OR2A2
Protein Characteristics:	AA 261-318
Origin:	Human
Source:	Wheat germ
Protein Type:	Recombinant
Purification tag / Conjugate:	This OR2A2 protein is labelled with GST tag.
Application:	ELISA, Western Blotting (WB), Affinity Purification (AP), Antibody Array (AA)

Product Details

Purpose:	OR2A2 (Human) Recombinant Protein (Q01)
Sequence:	PDSNQREEQE KMLSLFHSVL NPMLNPLIYS LRNAQLKGAL HRALQRKRSM RTVYGLCL
Characteristics:	Human OR2A2 partial ORF (NP_001005480.1, 261 a.a. - 318 a.a.) recombinant protein with GST-tag at N-terminal.
Purification:	in vitro wheat germ expression system

Target Details

Target:	OR2A2
Alternative Name:	OR2A2 (OR2A2 Products)
Background:	Full Gene Name: olfactory receptor, family 2, subfamily A, member 2

Target Details

Synonyms: OR2A17P,OR2A2P,OR7-11,OST008

Gene ID: 442361

NCBI Accession: [NM_001005480](#)

Application Details

Application Notes: Optimal working dilution should be determined by the investigator.

Comment: Preparation method: in vitro, wheat germ expression system
Product Quality tested by: 12.5% SDS-PAGE Stained with Coomassie Blue.

Restrictions: For Research Use only

Handling

Buffer: 50 mM Tris-HCl, 10 mM reduced Glutathione, pH =8.0 in the elution buffer.

Handling Advice: Aliquot to avoid repeated freezing and thawing.

Storage: -80 °C

Storage Comment: Best use within three months from the date of receipt of this protein.

Images

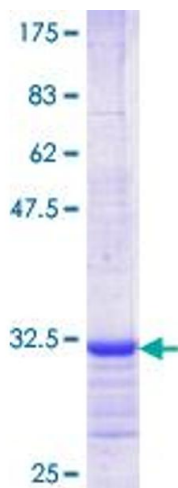


Image 1.