

Datasheet for ABIN1313485  
**OR2AG1 Protein (AA 1-316) (GST tag)**



[Go to Product page](#)

1 Image

Overview

Quantity:	25 µg
Target:	OR2AG1
Protein Characteristics:	AA 1-316
Origin:	Human
Source:	Wheat germ
Protein Type:	Recombinant
Purification tag / Conjugate:	This OR2AG1 protein is labelled with GST tag.
Application:	ELISA, Western Blotting (WB), Affinity Purification (AP), Antibody Array (AA)

Product Details

Purpose:	OR2AG1 (Human) Recombinant Protein (P01)
Sequence:	MELWNFTLGS GFILVGILND SGSPELLCAT ITILYLLALI SNGLLLLAIT MEARLHMPMY LLLGQLSLMD LLFTSVVTPK ALADFLRREN TISFGGCALQ MFLALTMGGA EDLLAFMAY DRYVAICHPL TYMTLMSSRA CWLMVATSWI LASLSALIYT VYTMHYPPFCR AQEIRHLLCE IPHLLKVACA DTSRYELMVY VMGVTFILIPS LAAILASYTQ ILLTVLHMPS NEGRKKALVT CSSHLTVVGM FYGAATFMYV LPSSFHSTRQ DNIISVFYTI VTPALNPLIY SLRNKEVMRA LRRVLGKYML PAHSTL
Characteristics:	Human OR2AG1 full-length ORF ( NP_001004489.1, 1 a.a. - 316 a.a.) recombinant protein with GST-tag at N-terminal.
Purification:	in vitro wheat germ expression system

## Target Details

Target:	OR2AG1
Alternative Name:	OR2AG1 ( <a href="#">OR2AG1 Products</a> )
Background:	Full Gene Name: olfactory receptor, family 2, subfamily AG, member 1 Synonyms: OR11-79,OR2AG3
Gene ID:	144125
NCBI Accession:	<a href="#">NM_001004489</a>

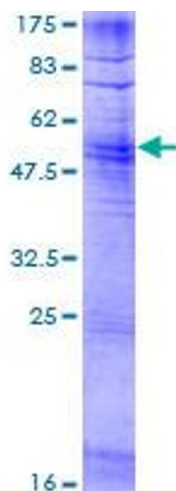
## Application Details

Application Notes:	Optimal working dilution should be determined by the investigator.
Comment:	Preparation method: in vitro, wheat germ expression system Product Quality tested by: 12.5% SDS-PAGE Stained with Coomassie Blue.
Restrictions:	For Research Use only

## Handling

Buffer:	50 mM Tris-HCl, 10 mM reduced Glutathione, pH =8.0 in the elution buffer.
Handling Advice:	Aliquot to avoid repeated freezing and thawing.
Storage:	-80 °C
Storage Comment:	Best use within three months from the date of receipt of this protein.

## Images



**Image 1.**