



Datasheet for ABIN1313489
OR2C1 Protein (AA 1-312) (GST tag)



[Go to Product page](#)

1 Image

Overview

Quantity:	2 µg
Target:	OR2C1
Protein Characteristics:	AA 1-312
Origin:	Human
Source:	Wheat germ
Protein Type:	Recombinant
Purification tag / Conjugate:	This OR2C1 protein is labelled with GST tag.
Application:	ELISA, Western Blotting (WB), Affinity Purification (AP), Antibody Array (AA)

Product Details

Purpose:	OR2C1 (Human) Recombinant Protein (P01)
Sequence:	MDGVNDSSLQ GFVLMGSDH PQLEMIFFIA ILFSYLLTLL GNSTIILSR LEARLHTPMY FFLSNLSSLD LAFATSSVPQ MLINLWGP GK TISYGGCITQ LYVFLWLGAT ECILLVVMFAF DRYVAVCRPL RYTAIMNPQL CWLLAVIAWL GGLGNSVIQS TFTLQLPLCG HRRVEGFLCE VPAMIKLACG DTSLNQAVLN GVCTFFTA VP LSIIVISYCL IAQAVLKIRS AEGRRKAFNT CLSHLLVVFL FYGSASYGYL LPAKNSKQDQ GKFI SLFYSL VTPMVNPLIY TLRNMEVKGA LRRLLGKGRE VG
Characteristics:	Human OR2C1 full-length ORF (AAI30329.1, 1 a.a. - 312 a.a.) recombinant protein with GST-tag at N-terminal.
Purification:	in vitro wheat germ expression system

Target Details

Target:	OR2C1
Alternative Name:	OR2C1 (OR2C1 Products)
Background:	Gene: olfactory receptor, family 2, subfamily C, member 1 Synonyms: MGC163200, MGC95444, OLFmf3, OR2C2P
Gene ID:	4993

Application Details

Application Notes:	Optimal working dilution should be determined by the investigator.
Restrictions:	For Research Use only

Handling

Buffer:	50 mM Tris-HCl, 10 mM reduced Glutathione, pH =8.0 in the elution buffer.
Handling Advice:	Aliquot to avoid repeated freezing and thawing.
Storage:	-80 °C
Storage Comment:	Best use within three months from the date of receipt of this protein.

Images

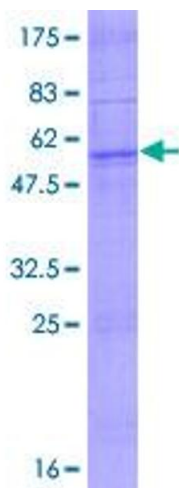


Image 1.