



[Go to Product page](#)

Datasheet for ABIN1313494

OR2F2 Protein (AA 1-317) (GST tag)

1 Image

Overview

| | |
|-------------------------------|-------------------------------------------------------------------------------|
| Quantity: | 10 µg |
| Target: | OR2F2 |
| Protein Characteristics: | AA 1-317 |
| Origin: | Human |
| Source: | Wheat germ |
| Protein Type: | Recombinant |
| Purification tag / Conjugate: | This OR2F2 protein is labelled with GST tag. |
| Application: | ELISA, Western Blotting (WB), Affinity Purification (AP), Antibody Array (AA) |

Product Details

| | |
|------------------|--------------------------------------------------------------------------------------------------------------------------------------------------------------------------------------------------------------------------------------------------------------------------------------------------------------------------------------------------------------------------|
| Purpose: | OR2F2 (Human) Recombinant Protein (P01) |
| Sequence: | MEIDNQTWVR EFILLGLSSD WCTQISLFSL FLVTYLMTVL GNCLIVLLIR LDSRLHTPMY FFLTNLSLVD VSYATSVVPQ LLAHFLAEHK AIPFQSCAAQ LFFSLALGGI EFVLLAVMAY DRHVAVSDRL RYSAIMHGGL CARLAITSWV SGSINSLVQT AITFQLPMCT NKFIDHISCE LLAVVRLACV DTSSNEAAIM VSSIVLLMTP FCLVLLSYIR IISTILKIQS REGRKKAFT CASHLTVVAL CYGTTIFTYI QPHSGPSVLQ EKLISVFYAI VMPLLNPIY SLRNKEVKGA WHKLLEKFSG LTKLGT |
| Characteristics: | Human OR2F2 full-length ORF (NP_001004685.1, 1 a.a. - 317 a.a.) recombinant protein with GST-tag at N-terminal. |
| Purification: | in vitro wheat germ expression system |

Target Details

| | |
|-------------------|----------------------------------------------------------------------------------------|
| Target: | OR2F2 |
| Alternative Name: | OR2F2 (OR2F2 Products) |
| Background: | Full Gene Name: olfactory receptor, family 2, subfamily F, member 2 Synonyms: OR7-1 |
| Gene ID: | 135948 |
| NCBI Accession: | NM_001004685 |

Application Details

| | |
|--------------------|--------------------------------------------------------------------------------------------------------------------------------------|
| Application Notes: | Optimal working dilution should be determined by the investigator. |
| Comment: | Preparation method: in vitro, wheat germ expression system Product Quality tested by: 12.5% SDS-PAGE Stained with Coomassie Blue. |
| Restrictions: | For Research Use only |

Handling

| | |
|------------------|---------------------------------------------------------------------------|
| Buffer: | 50 mM Tris-HCl, 10 mM reduced Glutathione, pH =8.0 in the elution buffer. |
| Handling Advice: | Aliquot to avoid repeated freezing and thawing. |
| Storage: | -80 °C |
| Storage Comment: | Best use within three months from the date of receipt of this protein. |

Images

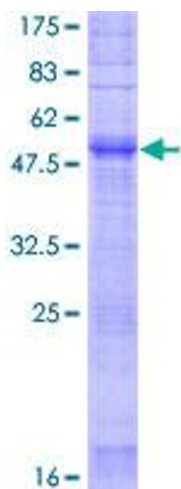


Image 1.