

Datasheet for ABIN1313500
OR2J1 Protein (AA 1-312) (GST tag)



[Go to Product page](#)

1 Image

Overview

Quantity:	10 µg
Target:	OR2J1
Protein Characteristics:	AA 1-312
Origin:	Human
Source:	Wheat germ
Protein Type:	Recombinant
Purification tag / Conjugate:	This OR2J1 protein is labelled with GST tag.
Application:	ELISA, Western Blotting (WB), Affinity Purification (AP), Antibody Array (AA)

Product Details

Purpose:	OR2J1 (Human) Recombinant Protein (P01)
Sequence:	MLMKKNASFE DFFILLGFSN WPHLEVVLV FVILIFYLITL IGNLFIILS YLDSHLHTPM YFFLSNLSFL DLCYTTSSIP QLLVNLWGPE KTISYAGCTV QLYFVLALGT AECVLLVMS YDRYAAVCRP LHYTVLMHPR FCRLAAASW VSGFTTSALH SSFTFWIPLC RHRLVDHFFC EVPALLRLSC VDTQANELTL MVMSSIFVLI PLILILTSYG AIARAVLSMQ STTGLQKVL R TCGAHLMVVS LFFIPVMCMY LQPPSENSQD QGKFIALFYT VVTPSLNPLI YTFRNKDVRG AVKRLMGWEW GM
Characteristics:	Human OR2J1 full-length ORF (Q9GZK6, 1 a.a. - 312 a.a.) recombinant protein with GST-tag at N-terminal.
Purification:	in vitro wheat germ expression system

Target Details

Target:	OR2J1
Alternative Name:	OR2J1 (OR2J1 Products)
Background:	Full Gene Name: olfactory receptor, family 2, subfamily J, member 1 Synonyms: 6M1-4P,OR2J1P,OR6-15,OR6-5,dJ80I19.2,hs6M1-4
Gene ID:	442185
UniProt:	Q9GZK6

Application Details

Application Notes:	Optimal working dilution should be determined by the investigator.
Comment:	Preparation method: in vitro, wheat germ expression system Product Quality tested by: 12.5% SDS-PAGE Stained with Coomassie Blue.
Restrictions:	For Research Use only

Handling

Buffer:	50 mM Tris-HCl, 10 mM reduced Glutathione, pH =8.0 in the elution buffer.
Handling Advice:	Aliquot to avoid repeated freezing and thawing.
Storage:	-80 °C
Storage Comment:	Best use within three months from the date of receipt of this protein.

Images

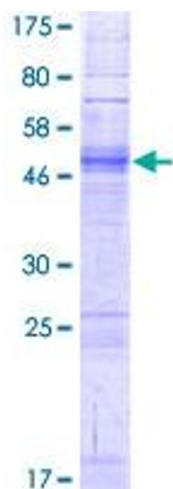


Image 1.