



[Go to Product page](#)

Datasheet for ABIN1313504
OR2K2 Protein (AA 1-316) (GST tag)

1 Image

Overview

| | |
|-------------------------------|---|
| Quantity: | 25 µg |
| Target: | OR2K2 |
| Protein Characteristics: | AA 1-316 |
| Origin: | Human |
| Source: | Wheat germ |
| Protein Type: | Recombinant |
| Purification tag / Conjugate: | This OR2K2 protein is labelled with GST tag. |
| Application: | ELISA, Western Blotting (WB), Affinity Purification (AP), Antibody Array (AA) |

Product Details

| | |
|------------------|---|
| Purpose: | OR2K2 (Human) Recombinant Protein (P01) |
| Sequence: | <p>MQGENFTIWS IFFLEGFSQY PGLEVLVVFV SLVMYLTLL GNSTLILITI LDSRLKTPMY LFLGNLSFMD ICYTSASVPT LLVNLLSSQK TIIFSGCAVQ MYLSLAMGST ECVLLAVMAY DRYVAICNPL RYSIIMNRCV CARMATVSWV TGCLTALLET SFALQIPLCG NLIDHFTCEI LAVLKLACTS SLLMNTIMLV VSILLPIPM LLVCISYIFI LSTILRITSA EGRNKAFSTC GAHLTVVILY YGAALSMYLYK PSSSNAQKID KIISLLYGVL TPMLNPIIYS LRNKEVKDAM KKLLGKITLH QTHEEL</p> |
| Characteristics: | Human OR2K2 full-length ORF (NP_995581.1, 1 a.a. - 316 a.a.) recombinant protein with GST-tag at N-terminal. |
| Purification: | in vitro wheat germ expression system |

Target Details

| | |
|-------------------|--|
| Target: | OR2K2 |
| Alternative Name: | OR2K2 (OR2K2 Products) |
| Background: | Full Gene Name: olfactory receptor, family 2, subfamily K, member 2 Synonyms: HSHTPCRH06,HTPCRH06,MGC133152,OR2AN1P,OR2AR1P |
| Gene ID: | 26248 |
| NCBI Accession: | NM_205859 |

Application Details

| | |
|--------------------|--|
| Application Notes: | Optimal working dilution should be determined by the investigator. |
| Comment: | Preparation method: in vitro, wheat germ expression system Product Quality tested by: 12.5% SDS-PAGE Stained with Coomassie Blue. |
| Restrictions: | For Research Use only |

Handling

| | |
|------------------|---|
| Buffer: | 50 mM Tris-HCl, 10 mM reduced Glutathione, pH =8.0 in the elution buffer. |
| Handling Advice: | Aliquot to avoid repeated freezing and thawing. |
| Storage: | -80 °C |
| Storage Comment: | Best use within three months from the date of receipt of this protein. |

Images

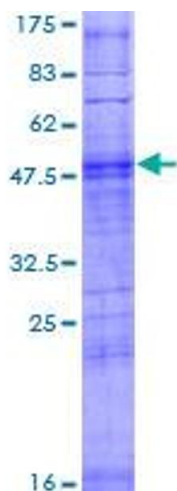


Image 1.