



[Go to Product page](#)

Datasheet for ABIN1313505

## OR2M3 Protein (AA 1-312) (GST tag)

### 1 Image

#### Overview

Quantity:	10 µg
Target:	OR2M3
Protein Characteristics:	AA 1-312
Origin:	Human
Source:	Wheat germ
Protein Type:	Recombinant
Purification tag / Conjugate:	This OR2M3 protein is labelled with GST tag.
Application:	ELISA, Western Blotting (WB), Affinity Purification (AP), Antibody Array (AA)

#### Product Details

Purpose:	OR2M3 (Human) Recombinant Protein (P01)
Sequence:	MARENSTFNS DFILLGIFNH SPTHTFLFFL VLAIFSVAFM GNSVMVLLIY LDTQLHTPMY LLLSQLSLMD LMLICTTVPK MAFNYLSGSK SISMAGCATQ IFFYTSLLGS ECFLAVMAY DRYTAICHPL RYTNLMSPKI CGLMTAFSWI LGSTDGIIDV VATFSFSYCG SREIAHFFCD FPSLLILSCS DTSIFEKILF ICCIVMIVFP VAIIIASYAR VILAVIHMGS GEGRRKAFTT CSSHLLVGM YYGAALFMYI RPTSDRSPTQ DKMVSVFYTI LTPMLNPLIY SLRNKEVTRA FMKILGKGKS GE
Characteristics:	Human OR2M3 full-length ORF ( NP_001004689.1, 1 a.a. - 312 a.a.) recombinant protein with GST-tag at N-terminal.
Purification:	in vitro wheat germ expression system

## Target Details

Target:	OR2M3
Alternative Name:	OR2M3 ( <a href="#">OR2M3 Products</a> )
Background:	Full Gene Name: olfactory receptor, family 2, subfamily M, member 3 Synonyms: OR1-54,OR2M3P,OR2M6,OST003
Gene ID:	127062
NCBI Accession:	<a href="#">NM_001004689</a>

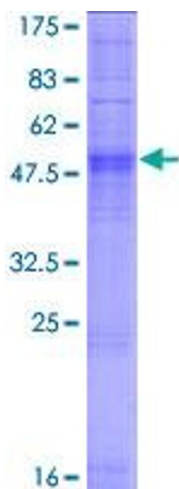
## Application Details

Application Notes:	Optimal working dilution should be determined by the investigator.
Comment:	Preparation method: in vitro, wheat germ expression system Product Quality tested by: 12.5% SDS-PAGE Stained with Coomassie Blue.
Restrictions:	For Research Use only

## Handling

Buffer:	50 mM Tris-HCl, 10 mM reduced Glutathione, pH =8.0 in the elution buffer.
Handling Advice:	Aliquot to avoid repeated freezing and thawing.
Storage:	-80 °C
Storage Comment:	Best use within three months from the date of receipt of this protein.

## Images



**Image 1.**