



[Go to Product page](#)

Datasheet for ABIN1313507

OR2M4 Protein (AA 1-311) (GST tag)

1 Image

Overview

| | |
|-------------------------------|---|
| Quantity: | 25 µg |
| Target: | OR2M4 |
| Protein Characteristics: | AA 1-311 |
| Origin: | Human |
| Source: | Wheat germ |
| Protein Type: | Recombinant |
| Purification tag / Conjugate: | This OR2M4 protein is labelled with GST tag. |
| Application: | ELISA, Western Blotting (WB), Affinity Purification (AP), Antibody Array (AA) |

Product Details

| | |
|------------------|---|
| Purpose: | OR2M4 (Human) Recombinant Protein (P01) |
| Sequence: | MWENQTFNS IFILLGIFNH SPTHFLFSL VLGIFSLALM ENISMVLLIY IEKQLHTPMY FLLSQLSLMD LMLICTTLPK MIFS YLSGKK SISLAGCGTQ IFFYVSLGA ECFLAVMAY DRYVAICHPL QYTILMNPCL CVFMTVASWT LGSLDGIIVL AAVLSFSYCS SLEIHFFCD VAALLPLSCT ETSAFERLLV ICCVMLIFP VSVIILSYSH VLRAVIHMGS GESRRKAFTT CSSHLSVGL YYGAAMFMYM RPASKHTPDQ DKMVSAFYTI LTPMLNPLIY SLRNKEVFRA LQKVLKRRKL I |
| Characteristics: | Human OR2M4 full-length ORF (NP_059974.1, 1 a.a. - 311 a.a.) recombinant protein with GST-tag at N-terminal. |
| Purification: | in vitro wheat germ expression system |

Target Details

| | |
|-------------------|--|
| Target: | OR2M4 |
| Alternative Name: | OR2M4 (OR2M4 Products) |
| Background: | Full Gene Name: olfactory receptor, family 2, subfamily M, member 4 Synonyms: HSHTPCRX18,HTPCRX18,OR1-55,OST710,TPCR100 |
| Gene ID: | 26245 |
| NCBI Accession: | NM_017504 |

Application Details

| | |
|--------------------|--|
| Application Notes: | Optimal working dilution should be determined by the investigator. |
| Comment: | Preparation method: in vitro, wheat germ expression system Product Quality tested by: 12.5% SDS-PAGE Stained with Coomassie Blue. |
| Restrictions: | For Research Use only |

Handling

| | |
|------------------|---|
| Buffer: | 50 mM Tris-HCl, 10 mM reduced Glutathione, pH =8.0 in the elution buffer. |
| Handling Advice: | Aliquot to avoid repeated freezing and thawing. |
| Storage: | -80 °C |
| Storage Comment: | Best use within three months from the date of receipt of this protein. |

Images

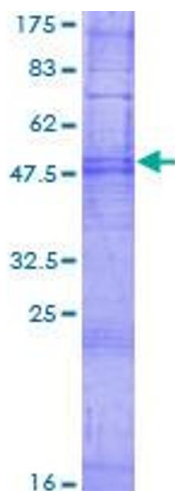


Image 1.