



Datasheet for ABIN1313509
OR2T10 Protein (AA 1-312) (GST tag)



[Go to Product page](#)

1 Image

Overview

Quantity:	25 µg
Target:	OR2T10
Protein Characteristics:	AA 1-312
Origin:	Human
Source:	Wheat germ
Protein Type:	Recombinant
Purification tag / Conjugate:	This OR2T10 protein is labelled with GST tag.
Application:	ELISA, Western Blotting (WB), Affinity Purification (AP), Antibody Array (AA)

Product Details

Purpose:	OR2T10 (Human) Recombinant Protein (P01)
Sequence:	MRLANQTLGG DFFLLGIFSQ ISHPGRLCLL IFSIFLMAVS WNITLILLIH IDSSLHTPMY FFINQLSLID LTYISVTVPK MLVNQLAKDK TISVLGCGTQ MYFYQLQGGA ECCLLAAMAY DRYVAICHPL RYSVLMSHRV CLLLASGCWF VGSVDGFMLT PIAMSPFCR SHEIQHFFCE VPAVLKLSCS DTSLYKIFMY LCCVIMLLIP VTVISVSYYY IILTIHKMNS VEGRKKAFIT CSSHITVVSL FYGAAIYNYM LPSSYQTPEK DMMSSFFYTI LTPVLNPIY SFRNKDVTRA LKKMLSVQKP PY
Characteristics:	Human OR2T10 full-length ORF (NP_001004693.1, 1 a.a. - 312 a.a.) recombinant protein with GST-tag at N-terminal.
Purification:	in vitro wheat germ expression system

Target Details

Target:	OR2T10
Alternative Name:	OR2T10 (OR2T10 Products)
Background:	Full Gene Name: olfactory receptor, family 2, subfamily T, member 10 Synonyms: OR1-64
Gene ID:	127069
NCBI Accession:	NM_001004693

Application Details

Application Notes:	Optimal working dilution should be determined by the investigator.
Comment:	Preparation method: in vitro, wheat germ expression system Product Quality tested by: 12.5% SDS-PAGE Stained with Coomassie Blue.
Restrictions:	For Research Use only

Handling

Buffer:	50 mM Tris-HCl, 10 mM reduced Glutathione, pH =8.0 in the elution buffer.
Handling Advice:	Aliquot to avoid repeated freezing and thawing.
Storage:	-80 °C
Storage Comment:	Best use within three months from the date of receipt of this protein.

Images

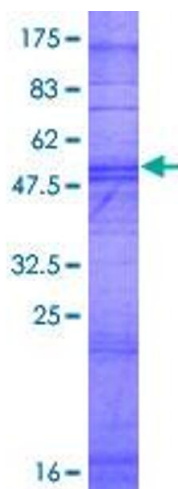


Image 1.