



[Go to Product page](#)

Datasheet for ABIN1313512

OR2T29 Protein (AA 1-309) (GST tag)

1 Image

Overview

Quantity:	25 µg
Target:	OR2T29
Protein Characteristics:	AA 1-309
Origin:	Human
Source:	Wheat germ
Protein Type:	Recombinant
Purification tag / Conjugate:	This OR2T29 protein is labelled with GST tag.
Application:	ELISA, Western Blotting (WB), Affinity Purification (AP), Antibody Array (AA)

Product Details

Purpose:	OR2T29 (Human) Recombinant Protein (P01)
Sequence:	MANHTGRLDF ILMGLFRQSK HPALLSVVIF VVFLKALSGN AVLILLIHCD AHLHSPMYFF ISQLSLMDMA YISVTVPKML LDQVMGVNKV SAPECGMQMF LYLTLAGSEF FLLATMAYDR YVAICHPLRY PVL MNHRVCL FLASGCWFLG SVDGFMLTPI TMSFPFCRSW EIHHFFCEVP AVTILSCSDT SLYETLMYLC CVLMLLIPVT IISSSYLLIL LTVHRMNSAE GRKKAFATCS SHLTVVILFY GAAVYTYMLP SSYHTPEKDM MVSVFYILT PVLNPLIYSL RNKDVMGALK KMLTVRFVL
Characteristics:	Human OR2T29 full-length ORF (NP_001004694.1, 1 a.a. - 309 a.a.) recombinant protein with GST-tag at N-terminal.
Purification:	in vitro wheat germ expression system

Target Details

Target:	OR2T29
Alternative Name:	OR2T29 (OR2T29 Products)
Background:	Full Gene Name: olfactory receptor, family 2, subfamily T, member 29 Synonyms:
Gene ID:	343563
NCBI Accession:	NM_001004694

Application Details

Application Notes:	Optimal working dilution should be determined by the investigator.
Comment:	Preparation method: in vitro, wheat germ expression system Product Quality tested by: 12.5% SDS-PAGE Stained with Coomassie Blue.
Restrictions:	For Research Use only

Handling

Buffer:	50 mM Tris-HCl, 10 mM reduced Glutathione, pH =8.0 in the elution buffer.
Handling Advice:	Aliquot to avoid repeated freezing and thawing.
Storage:	-80 °C
Storage Comment:	Best use within three months from the date of receipt of this protein.

Images

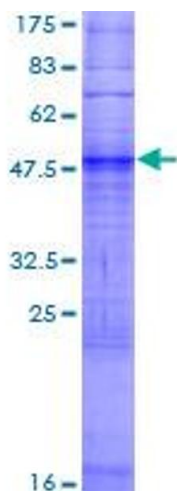


Image 1.