

Datasheet for ABIN1313514  
**OR2T4 Protein (AA 1-348) (GST tag)**



[Go to Product page](#)

1 Image

## Overview

Quantity:	25 µg
Target:	OR2T4
Protein Characteristics:	AA 1-348
Origin:	Human
Source:	Wheat germ
Protein Type:	Recombinant
Purification tag / Conjugate:	This OR2T4 protein is labelled with GST tag.
Application:	ELISA, Western Blotting (WB), Affinity Purification (AP), Antibody Array (AA)

## Product Details

Purpose:	OR2T4 (Human) Recombinant Protein (P01)
Sequence:	MDNITWMASH TGWSDFILMG LFRQSKHPMA NITWMANHTG WSDFILLGLF RQSKHPALLC VVIFVFLMA LSGNAVLILL IHCD AHLHTP MYFFISQLSL MDMAYISVTV PKMLLDQVMG VNKISAPECG MQMFFYVTLA GSEFFLLATM AYDRYVAICH PLRYPVLMNH RVCLFLSSGC WFLGSVDGFT FTPITMTFPF RGSREIHFF CEVPAVLNLS CSDTSLYEIF MYLCCVLMML IPVVISSSY LLILLTIHGM NSAEGRKKAF ATCSSHLTVV ILFYGAAIYT YMLPSSYHTP EKDMMVS VFY TILTPVVNPL IYSLRNKDVM GALKKMLTVE PAFQKAME
Characteristics:	Human OR2T4 full-length ORF ( NP_001004696.1, 1 a.a. - 348 a.a.) recombinant protein with GST-tag at N-terminal.
Purification:	in vitro wheat germ expression system

## Target Details

Target:	OR2T4
Alternative Name:	OR2T4 ( <a href="#">OR2T4 Products</a> )
Background:	Full Gene Name: olfactory receptor, family 2, subfamily T, member 4 Synonyms: OR1-60,OR2T4Q
Gene ID:	127074
NCBI Accession:	<a href="#">NM_001004696</a>

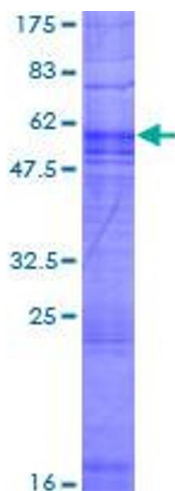
## Application Details

Application Notes:	Optimal working dilution should be determined by the investigator.
Comment:	Preparation method: in vitro, wheat germ expression system Product Quality tested by: 12.5% SDS-PAGE Stained with Coomassie Blue.
Restrictions:	For Research Use only

## Handling

Buffer:	50 mM Tris-HCl, 10 mM reduced Glutathione, pH =8.0 in the elution buffer.
Handling Advice:	Aliquot to avoid repeated freezing and thawing.
Storage:	-80 °C
Storage Comment:	Best use within three months from the date of receipt of this protein.

## Images



**Image 1.**