



[Go to Product page](#)

Datasheet for ABIN1313516

OR2W1 Protein (AA 1-320) (GST tag)

1 Image

Overview

Quantity:	25 µg
Target:	OR2W1
Protein Characteristics:	AA 1-320
Origin:	Human
Source:	Wheat germ
Protein Type:	Recombinant
Purification tag / Conjugate:	This OR2W1 protein is labelled with GST tag.
Application:	ELISA, Western Blotting (WB), Affinity Purification (AP), Antibody Array (AA)

Product Details

Purpose:	OR2W1 (Human) Recombinant Protein (P01)
Sequence:	MDQSNYSSLH GFILLGFSNH PKMEMILSGV VAIFYLITLV GNTAILASL LDSQLHTPMY FFLRNLSFLD LCFTTSIIPQ MLVNLWGPKD TISYVGCIIQ LYVYMWLGSV ECLLLAVMSY DRFTAICKPL HYFVVMNPHL CLKMIIMIWS ISLANSVWLC TLTLNLPTCG NNILDHFLCE LPALVKIACV DTTTVEMSVF ALGIIIVLTP LILILISYGY IAKAVLRTKS KASQRKAMNT CGSHLTVVSM FYGTIIYMYL QPGNRASKDQ GKFLTLFYTV ITPSLNPLIY TLRNKDMKDA LKKLMRFHHK STKIKRNCKS
Characteristics:	Human OR2W1 full-length ORF (NP_112165.1, 1 a.a. - 320 a.a.) recombinant protein with GST-tag at N-terminal.
Purification:	in vitro wheat germ expression system

Target Details

Target:	OR2W1
Alternative Name:	OR2W1 (OR2W1 Products)
Background:	Full Gene Name: olfactory receptor, family 2, subfamily W, member 1 Synonyms: MGC119162,MGC119163,MGC119165,hs6M1-15
Gene ID:	26692
NCBI Accession:	NM_030903

Application Details

Application Notes:	Optimal working dilution should be determined by the investigator.
Comment:	Preparation method: in vitro, wheat germ expression system Product Quality tested by: 12.5% SDS-PAGE Stained with Coomassie Blue.
Restrictions:	For Research Use only

Handling

Buffer:	50 mM Tris-HCl, 10 mM reduced Glutathione, pH =8.0 in the elution buffer.
Handling Advice:	Aliquot to avoid repeated freezing and thawing.
Storage:	-80 °C
Storage Comment:	Best use within three months from the date of receipt of this protein.

Images

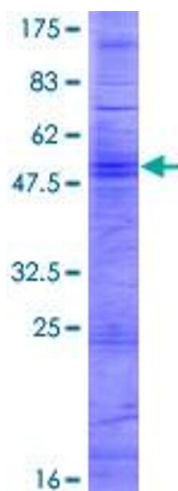


Image 1.