



[Go to Product page](#)

Datasheet for ABIN1313518

## OR2Y1 Protein (AA 1-311) (GST tag)

### 1 Image

#### Overview

Quantity:	25 µg
Target:	OR2Y1
Protein Characteristics:	AA 1-311
Origin:	Human
Source:	Wheat germ
Protein Type:	Recombinant
Purification tag / Conjugate:	This OR2Y1 protein is labelled with GST tag.
Application:	ELISA, Western Blotting (WB), Affinity Purification (AP), Antibody Array (AA)

#### Product Details

Purpose:	OR2Y1 (Human) Recombinant Protein (P01)
Sequence:	MGSFNSTFED GFILVGFSDW PQLEPILFVF IFIFYSLTLF GNTIIIALSW LDLRLHTPMY FFLSHLSLLD LCFTTSTVPQ LLINLCGVDR TITRGGCVAQ LFIYLALGST ECVLLVMAF DRYAAVCRPL HYMAIMHPHL CQTLAIASWG AGFVNSLIQT GLAMAMPLCG HRLNHFFCEM PVFLKLACAD TEGTEAKMFV ARVIVVAVPA ALILGSYVHI AHAVLRVKST AGRRKAFGTC GSHLLVFLF YGSAITYLQ SIHNYSEREG KFVALFYTII TPILNPLIYT LRNKDVKGAL WKVLWRGRDS G
Characteristics:	Human OR2Y1 full-length ORF ( NP_001001657.1, 1 a.a. - 311 a.a.) recombinant protein with GST-tag at N-terminal.
Purification:	in vitro wheat germ expression system

## Target Details

Target:	OR2Y1
Alternative Name:	OR2Y1 ( <a href="#">OR2Y1 Products</a> )
Background:	Full Gene Name: olfactory receptor, family 2, subfamily Y, member 1 Synonyms: OR5-2
Gene ID:	134083
NCBI Accession:	<a href="#">NM_001001657</a>

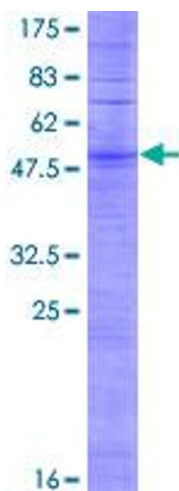
## Application Details

Application Notes:	Optimal working dilution should be determined by the investigator.
Comment:	Preparation method: in vitro, wheat germ expression system Product Quality tested by: 12.5% SDS-PAGE Stained with Coomassie Blue.
Restrictions:	For Research Use only

## Handling

Buffer:	50 mM Tris-HCl, 10 mM reduced Glutathione, pH =8.0 in the elution buffer.
Handling Advice:	Aliquot to avoid repeated freezing and thawing.
Storage:	-80 °C
Storage Comment:	Best use within three months from the date of receipt of this protein.

## Images



**Image 1.**