



[Go to Product page](#)

Datasheet for ABIN1313523

## OR3A4 Protein (AA 1-348) (GST tag)

### 1 Image

#### Overview

Quantity:	10 µg
Target:	OR3A4 (OR3A4P)
Protein Characteristics:	AA 1-348
Origin:	Human
Source:	Wheat germ
Protein Type:	Recombinant
Purification tag / Conjugate:	This OR3A4 protein is labelled with GST tag.
Application:	ELISA, Western Blotting (WB), Affinity Purification (AP), Antibody Array (AA)

#### Product Details

Purpose:	OR3A4 (Human) Recombinant Protein (P01)
Sequence:	MDLGNSGNDV VTKFVLLGL TETAALQPIL FVIFLLAYVT TIGGTLNILS AILMETKLHS PMYFFLGNLS LPDVGCVSVT VPAMLSHFIS NDRSIPYKAC LSEFFFHLL AGADCFLITL MAYDRYLAIC QSLTYSSRMS WGIQALVGM SCVFSFTNAL TQTVALSPLN FCGPNVINHF YCDLPQPFQL SCSSVHLNGQ LLFVAAAFMG VAPLVLITVS YAHVAAAVLR IRSAEGRKKA FSTCSSHLTV VGIFYGTGVF SYTRLGSVES SDKDKGIGIL NTVISPMLNP LIYWTSLLDV GCISHCSSDA GVSPGPPVQS SLCCQLQFTAL LSPPPGWGGL SPLNSHGL
Characteristics:	Human OR3A4 full-length ORF ( NP_001005334.1, 1 a.a. - 348 a.a.) recombinant protein with GST-tag at N-terminal.
Purification:	in vitro wheat germ expression system

## Target Details

Target:	OR3A4 (OR3A4P)
Alternative Name:	OR3A4 ( <a href="#">OR3A4P Products</a> )
Background:	Full Gene Name: olfactory receptor, family 3, subfamily A, member 4 Synonyms: OLFRA05,OLFRA06,OR17-13,OR17-16,OR17-24,OR17-25,OR24,OR25,OR3A4P,OR3A5P
Gene ID:	390756
NCBI Accession:	<a href="#">NM_001005334</a>

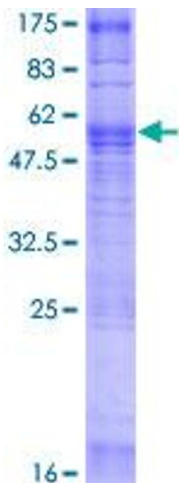
## Application Details

Application Notes:	Optimal working dilution should be determined by the investigator.
Comment:	Preparation method: in vitro, wheat germ expression system Product Quality tested by: 12.5% SDS-PAGE Stained with Coomassie Blue.
Restrictions:	For Research Use only

## Handling

Buffer:	50 mM Tris-HCl, 10 mM reduced Glutathione, pH =8.0 in the elution buffer.
Handling Advice:	Aliquot to avoid repeated freezing and thawing.
Storage:	-80 °C
Storage Comment:	Best use within three months from the date of receipt of this protein.

## Images



**Image 1.**