



[Go to Product page](#)

Datasheet for ABIN1313534

## OR4D5 Protein (AA 1-318) (GST tag)

### 1 Image

#### Overview

Quantity:	25 µg
Target:	OR4D5
Protein Characteristics:	AA 1-318
Origin:	Human
Source:	Wheat germ
Protein Type:	Recombinant
Purification tag / Conjugate:	This OR4D5 protein is labelled with GST tag.
Application:	ELISA, Western Blotting (WB), Affinity Purification (AP), Antibody Array (AA)

#### Product Details

Purpose:	OR4D5 (Human) Recombinant Protein (P01)
Sequence:	MNPANHSQVA GFVLLGLSQV WELRFVFFTV FSAVYFMTVW GNLLIVVIVT SDPHLHTTMY FLLGNLSFLD FCYSSITAPR MLVDLLSGNP TISFGGCLTQ LFFFHFIGGI KIFLLTVMAY DRYIAISQPL HYTLIMNQTV CALLMAASWV GGFHSIVQI ALTIQLPFCG PDKLDNFYCD VPQLIKLACT DTFVLELLMV SNNGLVTLMC FLVLLGSYTA LLVMLRSHSR EGRSKALSTC ASHIAVVTLI FVPCIYVYTR PFRTFPMDKA VSVLYTIVTP MLNPAIYTLR NKEVIMAMKK LWRRKKDPIG PLEHRPLH
Characteristics:	Human OR4D5 full-length ORF ( NP_001001965.1, 1 a.a. - 318 a.a.) recombinant protein with GST-tag at N-terminal.
Purification:	in vitro wheat germ expression system

## Target Details

Target:	OR4D5
Alternative Name:	OR4D5 ( <a href="#">OR4D5 Products</a> )
Background:	Full Gene Name: olfactory receptor, family 4, subfamily D, member 5 Synonyms: OR11-276
Gene ID:	219875
NCBI Accession:	<a href="#">NM_001001965</a>

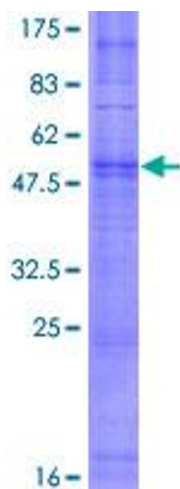
## Application Details

Application Notes:	Optimal working dilution should be determined by the investigator.
Comment:	Preparation method: in vitro, wheat germ expression system Product Quality tested by: 12.5% SDS-PAGE Stained with Coomassie Blue.
Restrictions:	For Research Use only

## Handling

Buffer:	50 mM Tris-HCl, 10 mM reduced Glutathione, pH =8.0 in the elution buffer.
Handling Advice:	Aliquot to avoid repeated freezing and thawing.
Storage:	-80 °C
Storage Comment:	Best use within three months from the date of receipt of this protein.

## Images



**Image 1.**