



[Go to Product page](#)

Datasheet for ABIN1313548

## OR4X1 Protein (AA 1-305) (GST tag)

### 1 Image

#### Overview

Quantity:	25 µg
Target:	OR4X1
Protein Characteristics:	AA 1-305
Origin:	Human
Source:	Wheat germ
Protein Type:	Recombinant
Purification tag / Conjugate:	This OR4X1 protein is labelled with GST tag.
Application:	ELISA, Western Blotting (WB), Affinity Purification (AP), Antibody Array (AA)

#### Product Details

Purpose:	OR4X1 (Human) Recombinant Protein (P01)
Sequence:	MVATNNVTEI IFVGFSQNWS EQRVISVMFL LMYTAVVLGN GLIVVTILAS KVLTSPLYFF LSYLSFVEIC YCSVMAPKLI FDSFIKRVKVI SLKGCLTQMF SLHFFGGTEA FLLMVMAYDR YVAICKPLHY MAIMNQRMCG LLVRIAWGGG LLHSVGQTFL IFQLPFCGPN IMDHYFCDVH PVLELACADT FFISLLIITN GGSISVVSFF VLMASYLIIL HFLRSHNLEG QHKALSTCAS HVTVVDLFFI PCSLVYIRPC VTLPADKIVA VFYTVVTPLL NPVIYSFRNA EVKNAMRRFI GGKVI
Characteristics:	Human OR4X1 full-length ORF ( NP_001004726.1, 1 a.a. - 305 a.a.) recombinant protein with GST-tag at N-terminal.
Purification:	in vitro wheat germ expression system

## Target Details

Target:	OR4X1
Alternative Name:	OR4X1 ( <a href="#">OR4X1 Products</a> )
Background:	Full Gene Name: olfactory receptor, family 4, subfamily X, member 1 Synonyms: OR11-104
Gene ID:	390113
NCBI Accession:	<a href="#">NM_001004726</a>

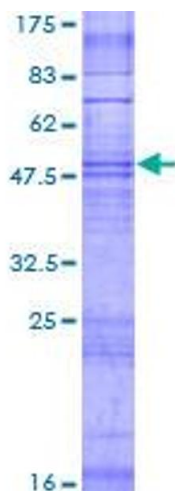
## Application Details

Application Notes:	Optimal working dilution should be determined by the investigator.
Comment:	Preparation method: in vitro, wheat germ expression system Product Quality tested by: 12.5% SDS-PAGE Stained with Coomassie Blue.
Restrictions:	For Research Use only

## Handling

Buffer:	50 mM Tris-HCl, 10 mM reduced Glutathione, pH =8.0 in the elution buffer.
Handling Advice:	Aliquot to avoid repeated freezing and thawing.
Storage:	-80 °C
Storage Comment:	Best use within three months from the date of receipt of this protein.

## Images



**Image 1.**