



[Go to Product page](#)

Datasheet for ABIN1313559

OR51L1 Protein (AA 1-315) (GST tag)

1 Image

Overview

Quantity:	10 µg
Target:	OR51L1
Protein Characteristics:	AA 1-315
Origin:	Human
Source:	Wheat germ
Protein Type:	Recombinant
Purification tag / Conjugate:	This OR51L1 protein is labelled with GST tag.
Application:	ELISA, Western Blotting (WB), Affinity Purification (AP), Antibody Array (AA)

Product Details

Purpose:	OR51L1 (Human) Recombinant Protein (P01)
Sequence:	MGDWNNSDAV EPFILRGFP GLEYVHSWLS ILFCLAYLVA FMGNVTILSV IWISSLHQP MYFISILAV NDLGMSLSTL PTMLAVLWLD APEIQASACY AQLFFIHTFT FLESSVLLAM AFDRFVAICH PLHYPTILTN SVIGKIGLAC LLRSLGVVLP TPLLLRHYHY CHGNALSHAF CLHQDVLRLS CTDARTNSIY GLCVVIATLG VDSIFILLSY VLILNTVLDI ASREEQLKAL NTCVSHICVV LIFFVPVIGV SMVHRFGKHL SPIVHILMAD IYLLPPVLN PIVYSVRTKQ IRLGILHKFV LRRRF
Characteristics:	Human OR51L1 full-length ORF (AAI46585.1, 1 a.a. - 315 a.a.) recombinant protein with GST-tag at N-terminal.
Purification:	in vitro wheat germ expression system

Target Details

Target:	OR51L1
Alternative Name:	OR51L1 (OR51L1 Products)
Background:	Full Gene Name: olfactory receptor, family 51, subfamily L, member 1 Synonyms: OR11-31
Gene ID:	119682

Application Details

Application Notes:	Optimal working dilution should be determined by the investigator.
Comment:	Preparation method: in vitro, wheat germ expression system Product Quality tested by: 12.5% SDS-PAGE Stained with Coomassie Blue.
Restrictions:	For Research Use only

Handling

Buffer:	50 mM Tris-HCl, 10 mM reduced Glutathione, pH =8.0 in the elution buffer.
Handling Advice:	Aliquot to avoid repeated freezing and thawing.
Storage:	-80 °C
Storage Comment:	Best use within three months from the date of receipt of this protein.

Images

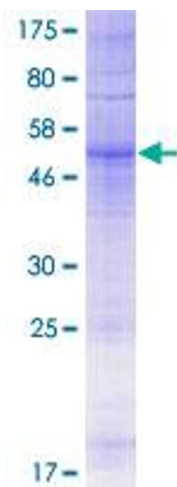


Image 1.