



[Go to Product page](#)

Datasheet for ABIN1313563

## OR52B2 Protein (AA 1-323) (GST tag)

### 1 Image

#### Overview

Quantity:	25 µg
Target:	OR52B2
Protein Characteristics:	AA 1-323
Origin:	Human
Source:	Wheat germ
Protein Type:	Recombinant
Purification tag / Conjugate:	This OR52B2 protein is labelled with GST tag.
Application:	ELISA, Western Blotting (WB), Affinity Purification (AP), Antibody Array (AA)

#### Product Details

Purpose:	OR52B2 (Human) Recombinant Protein (P01)
Sequence:	MSHTNVTIFH PAVFVLPGIP GLEAYHIWLS IPLCLiyITA VLGNSILIV IVMERNLHVP MYFFLSMLAV MDILLSTTTV PKALAI FWLQ AHNIAFDACV TQGGFFVHMMF VGESAILLAM AFDRFVAICA PLRYTTVLTW PVVGRIALAV ITRSFciIFP VIFLLKRLPF CLTNIVPHSY CEHIGVARLA CADITVNIWY GFSVPiVMVI LDVILIAVSy SLILRAVFRl PSQDARHKAL STCGSHLCVI LMFYVPSFFT LLTHHFGRNI PQHVHILLAN LYVAVPPMLN PIVYGVKTKQ IREGVAHRFF DIKTWCCTSP LGS
Characteristics:	Human OR52B2 full-length ORF ( NP_001004052.1, 1 a.a. - 323 a.a.) recombinant protein with GST-tag at N-terminal.
Purification:	in vitro wheat germ expression system

## Target Details

Target:	OR52B2
Alternative Name:	OR52B2 ( <a href="#">OR52B2 Products</a> )
Background:	Full Gene Name: olfactory receptor, family 52, subfamily B, member 2 Synonyms: OR11-70
Gene ID:	255725
NCBI Accession:	<a href="#">NM_001004052</a>

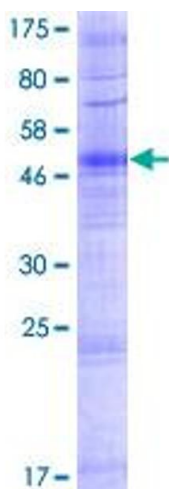
## Application Details

Application Notes:	Optimal working dilution should be determined by the investigator.
Comment:	Preparation method: in vitro, wheat germ expression system Product Quality tested by: 12.5% SDS-PAGE Stained with Coomassie Blue.
Restrictions:	For Research Use only

## Handling

Buffer:	50 mM Tris-HCl, 10 mM reduced Glutathione, pH =8.0 in the elution buffer.
Handling Advice:	Aliquot to avoid repeated freezing and thawing.
Storage:	-80 °C
Storage Comment:	Best use within three months from the date of receipt of this protein.

## Images



**Image 1.**