



Datasheet for ABIN1313564

## OR52B6 Protein (AA 1-335) (GST tag)



[Go to Product page](#)

### 1 Image

#### Overview

Quantity:	25 µg
Target:	OR52B6
Protein Characteristics:	AA 1-335
Origin:	Human
Source:	Wheat germ
Protein Type:	Recombinant
Purification tag / Conjugate:	This OR52B6 protein is labelled with GST tag.
Application:	ELISA, Western Blotting (WB), Affinity Purification (AP), Antibody Array (AA)

#### Product Details

Purpose:	OR52B6 (Human) Recombinant Protein (P01)
Sequence:	<p>MAQVRALHKI MALFSANSIG AMNNSDTRIA GCFLTGIPGL EQLHIWLSIP FCIMYIAALE</p> <p>GNGILICVIL SQAILHEPMY IFLSMLASAD VLLSTTTMPK ALANLWLGYS HISFDGCLTQ</p> <p>MFFIHFLFIH SAVLLAMAFD RYVAICSPLR YVTILTSKVI GKIVTATLSR SFIIMFPSIF LLEHLHYCQI</p> <p>NIIAHTFCEH MGIAHLSCSD ISINVWYGLA AALLSTGLDI MLITVSYIHI LQAVFRLLSQ</p> <p>DARSKALSTC GSHICVILLF YVPALFSVFA YRFGGRSIPC YVHILLASLY VVIPMLNPV</p> <p>IYGVRTKPIL EGAQMFSNL AKGSK</p>
Characteristics:	Human OR52B6 full-length ORF ( NP_001005162.1, 1 a.a. - 335 a.a.) recombinant protein with GST-tag at N-terminal.
Purification:	in vitro wheat germ expression system

## Target Details

Target:	OR52B6
Alternative Name:	OR52B6 ( <a href="#">OR52B6 Products</a> )
Background:	Full Gene Name: olfactory receptor, family 52, subfamily B, member 6 Synonyms: OR11-47
Gene ID:	340980
NCBI Accession:	<a href="#">NM_001005162</a>

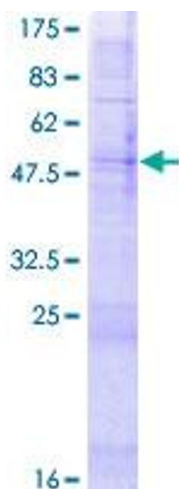
## Application Details

Application Notes:	Optimal working dilution should be determined by the investigator.
Comment:	Preparation method: in vitro, wheat germ expression system Product Quality tested by: 12.5% SDS-PAGE Stained with Coomassie Blue.
Restrictions:	For Research Use only

## Handling

Buffer:	50 mM Tris-HCl, 10 mM reduced Glutathione, pH =8.0 in the elution buffer.
Handling Advice:	Aliquot to avoid repeated freezing and thawing.
Storage:	-80 °C
Storage Comment:	Best use within three months from the date of receipt of this protein.

## Images



**Image 1.**