



[Go to Product page](#)

Datasheet for ABIN1313567

OR52E2 Protein (AA 1-325) (GST tag)

1 Image

Overview

Quantity:	25 µg
Target:	OR52E2
Protein Characteristics:	AA 1-325
Origin:	Human
Source:	Wheat germ
Protein Type:	Recombinant
Purification tag / Conjugate:	This OR52E2 protein is labelled with GST tag.
Application:	ELISA, Western Blotting (WB), Affinity Purification (AP), Antibody Array (AA)

Product Details

Purpose:	OR52E2 (Human) Recombinant Protein (P01)
Sequence:	MFLPNDTQFH PSSFLLLGIP GLETLHIWIG FPFCAYMIA LIGNFTILLV IKTDSSLHQP MFYFLAMLAT TDVGLSTATI PKMLGIFWIN LRGIIFEACL TQMFFIHNFT LMESAVLVAM AYDSYVAICN PLQYSAILTN KVVSVIGLGV FVRALIFVIP SILLILRLPF CGNHVIPHTY CEHMGLAHL CASIKINIY GLCAICNLVF DITVIALSYV HILCAVFRFP THEARLKSL TCGSHVCVIL AFYTPALFSF MTHCFGRNVP RYIHILLANL YVVPPMLNP VIYGVRTKQI YKCVKILLQ EQGMEKEEYL IHTRF
Characteristics:	Human OR52E2 full-length ORF (NP_001005164.1, 1 a.a. - 325 a.a.) recombinant protein with GST-tag at N-terminal.
Purification:	in vitro wheat germ expression system

Target Details

Target:	OR52E2
Alternative Name:	OR52E2 (OR52E2 Products)
Background:	Full Gene Name: olfactory receptor, family 52, subfamily E, member 2 Synonyms:
Gene ID:	119678
NCBI Accession:	NM_001005164

Application Details

Application Notes:	Optimal working dilution should be determined by the investigator.
Comment:	Preparation method: in vitro, wheat germ expression system Product Quality tested by: 12.5% SDS-PAGE Stained with Coomassie Blue.
Restrictions:	For Research Use only

Handling

Buffer:	50 mM Tris-HCl, 10 mM reduced Glutathione, pH =8.0 in the elution buffer.
Handling Advice:	Aliquot to avoid repeated freezing and thawing.
Storage:	-80 °C
Storage Comment:	Best use within three months from the date of receipt of this protein.

Images

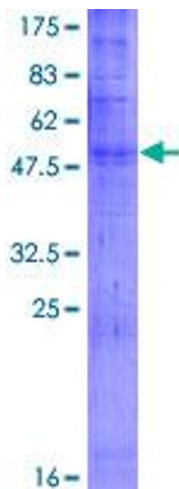


Image 1.