

Datasheet for ABIN1313569
OR52E6 Protein (AA 1-313) (GST tag)



[Go to Product page](#)

1 Image

Overview

Quantity:	25 µg
Target:	OR52E6
Protein Characteristics:	AA 1-313
Origin:	Human
Source:	Wheat germ
Protein Type:	Recombinant
Purification tag / Conjugate:	This OR52E6 protein is labelled with GST tag.
Application:	ELISA, Western Blotting (WB), Affinity Purification (AP), Antibody Array (AA)

Product Details

Purpose:	OR52E6 (Human) Recombinant Protein (P01)
Sequence:	MPIANDTQFH TSSFLLLGIP GLEDVHIWIG FPFSSVYLIA LLGNAAIFFV IQTEQSLHEP MYYCLAMLDS IDLSLSTATI PKMLGIFWFN IKEISFGGYL SQMFFIHFFT VMESIVLVAM AFDRYIAICK PLWYTMILTS KIISLIAGIA VLRSLYMVIP LVFLLLRLPF CGHRIIPHTY CEHMGJARLA CASIKVNIMF GLGSISLLLL DVLLIILSHI RILYAVFCLP SWEARLKALN TCGSHIGVIL AFSTPAFFSF FTHCFGHDIP QYIHIFLANL YVVVPPTLNP VIYGVRTKHI RETVLRIFFK TDH
Characteristics:	Human OR52E6 full-length ORF (NP_001005167.1, 1 a.a. - 313 a.a.) recombinant protein with GST-tag at N-terminal.
Purification:	in vitro wheat germ expression system

Target Details

Target:	OR52E6
Alternative Name:	OR52E6 (OR52E6 Products)
Background:	Full Gene Name: olfactory receptor, family 52, subfamily E, member 6 Synonyms: OR11-58
Gene ID:	390078
NCBI Accession:	NM_001005167

Application Details

Application Notes:	Optimal working dilution should be determined by the investigator.
Comment:	Preparation method: in vitro, wheat germ expression system Product Quality tested by: 12.5% SDS-PAGE Stained with Coomassie Blue.
Restrictions:	For Research Use only

Handling

Buffer:	50 mM Tris-HCl, 10 mM reduced Glutathione, pH =8.0 in the elution buffer.
Handling Advice:	Aliquot to avoid repeated freezing and thawing.
Storage:	-80 °C
Storage Comment:	Best use within three months from the date of receipt of this protein.

Images

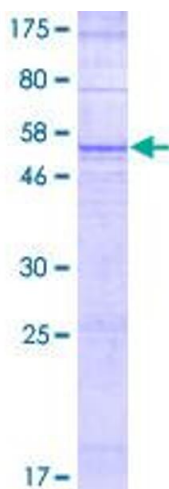


Image 1.