



[Go to Product page](#)

Datasheet for ABIN1313590

## OR5H6 Protein (AA 1-325) (GST tag)

### 1 Image

#### Overview

Quantity:	25 µg
Target:	OR5H6
Protein Characteristics:	AA 1-325
Origin:	Human
Source:	Wheat germ
Protein Type:	Recombinant
Purification tag / Conjugate:	This OR5H6 protein is labelled with GST tag.
Application:	ELISA, Western Blotting (WB), Affinity Purification (AP), Antibody Array (AA)

#### Product Details

Purpose:	OR5H6 (Human) Recombinant Protein (P01)
Sequence:	MFLYLCFIFQ RTCSEEMEEE NATLLTEFVL TGFLHQPDCK IPLFLAFLVI YLITIMGNLG LIVLIWKDPH LHIPMYLFLG SLAFVDASLS STVTPKMLIN FLAKSKMISL SECMVQFFSL VTTVTTECFEFL LATMAYDRYV AICKALLYPV IMTNELCIQL LVLSFIGGLL HALIHEAFSF RLTFCNSNII QHFYCDIPL LKISCTDSSI NFLMVIFAG SVQVFTIGTI LISYIILFT ILEKKSIGI RKAVSTCGAH LLSVSLYYGP LTFKYLGSAS PQADDQDMME SLFYTVIVPL LNPMIYSLRN KQVIASFTKM FKSNV
Characteristics:	Human OR5H6 full-length ORF ( NP_001005479.1, 1 a.a. - 325 a.a.) recombinant protein with GST-tag at N-terminal.
Purification:	in vitro wheat germ expression system

## Target Details

Target:	OR5H6
Alternative Name:	OR5H6 ( <a href="#">OR5H6 Products</a> )
Background:	Full Gene Name: olfactory receptor, family 5, subfamily H, member 6 Synonyms: OR3-11
Gene ID:	79295
NCBI Accession:	<a href="#">NM_001005479</a>

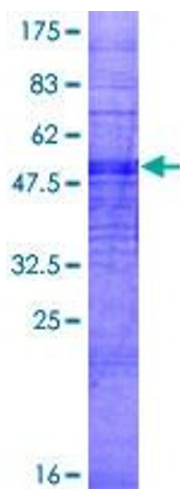
## Application Details

Application Notes:	Optimal working dilution should be determined by the investigator.
Comment:	Preparation method: in vitro, wheat germ expression system Product Quality tested by: 12.5% SDS-PAGE Stained with Coomassie Blue.
Restrictions:	For Research Use only

## Handling

Buffer:	50 mM Tris-HCl, 10 mM reduced Glutathione, pH =8.0 in the elution buffer.
Handling Advice:	Aliquot to avoid repeated freezing and thawing.
Storage:	-80 °C
Storage Comment:	Best use within three months from the date of receipt of this protein.

## Images



**Image 1.**