



Datasheet for ABIN1313597

## OR5R1 Protein (AA 1-324) (GST tag)



[Go to Product page](#)

### 1 Image

#### Overview

Quantity:	25 µg
Target:	OR5R1
Protein Characteristics:	AA 1-324
Origin:	Human
Source:	Wheat germ
Protein Type:	Recombinant
Purification tag / Conjugate:	This OR5R1 protein is labelled with GST tag.
Application:	ELISA, Western Blotting (WB), Affinity Purification (AP), Antibody Array (AA)

#### Product Details

Purpose:	OR5R1 (Human) Recombinant Protein (P01)
Sequence:	MAEVNIIYVT VFILKGITNR PELQAPCFGV FLVIYLVTVL GNLGLITLIK IDTRLHTPMY YFLSHLAFVD LCYSSAITPK MMVNFVVERN TIPFHACATQ LGCFLTFMIT ECFLASMAY DCYVAICSPL HYSTLMSRRV CIQLVAVPYI YSFLVALFHT VITFRLTYCG PNLINHFYCD DLPFLALSCS DTHMKEILIF AFAGFDMISS SSVILTSYIF IIAAILRIRS TQGQHKAIST CGSHMVTVTI FYGTLIFMYL QPKSNHSLDT DKMASVFYTV VIPMLNPLIY SLRNKEVKDA SKKALDKGCE NLQILTFLKI RKLY
Characteristics:	Human OR5R1 full-length ORF ( NP_001004744.1, 1 a.a. - 324 a.a.) recombinant protein with GST-tag at N-terminal.
Purification:	in vitro wheat germ expression system

## Target Details

Target:	OR5R1
Alternative Name:	OR5R1 ( <a href="#">OR5R1 Products</a> )
Background:	Full Gene Name: olfactory receptor, family 5, subfamily R, member 1 Synonyms: OR11-185,OR5R1P
Gene ID:	219479
NCBI Accession:	<a href="#">NM_001004744</a>

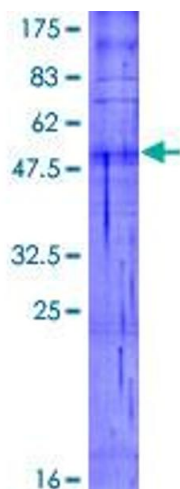
## Application Details

Application Notes:	Optimal working dilution should be determined by the investigator.
Comment:	Preparation method: in vitro, wheat germ expression system Product Quality tested by: 12.5% SDS-PAGE Stained with Coomassie Blue.
Restrictions:	For Research Use only

## Handling

Buffer:	50 mM Tris-HCl, 10 mM reduced Glutathione, pH =8.0 in the elution buffer.
Handling Advice:	Aliquot to avoid repeated freezing and thawing.
Storage:	-80 °C
Storage Comment:	Best use within three months from the date of receipt of this protein.

## Images



**Image 1.**