



[Go to Product page](#)

Datasheet for ABIN1313601

OR6B2 Protein (AA 1-312) (GST tag)

1 Image

Overview

Quantity:	25 µg
Target:	OR6B2
Protein Characteristics:	AA 1-312
Origin:	Human
Source:	Wheat germ
Protein Type:	Recombinant
Purification tag / Conjugate:	This OR6B2 protein is labelled with GST tag.
Application:	ELISA, Western Blotting (WB), Affinity Purification (AP), Antibody Array (AA)

Product Details

Purpose:	OR6B2 (Human) Recombinant Protein (P01)
Sequence:	MSGENVTKVS TFILVGLPTA PGLQYLLFLL FLLTYLFLV ENLAIIIVW SSTS LHRPMY YFLSSMSFLE IWYVSDITPK MLEGFLLQKQK RISFVGCMTQ LYFFSSLVCT ECVLLASMAY DRYVAICHPL RYHVLVTPGL CLQLVGFVSGFTISMIVK CFISSVTFGC SNVLNHHFFCD ISPILKLACT DFSTAELVDF ILAFIILVFP LLATILSYWH ITLAVLRIPS ATGCWRAFST CASHLTVVTV FYTALLFMYV RPQAIDSQSS NKLISAVYTV VTIINPLIY CLRNKEFKDA LKKALGLGQT SH
Characteristics:	Human OR6B2 full-length ORF (NP_001005853.1, 1 a.a. - 312 a.a.) recombinant protein with GST-tag at N-terminal.
Purification:	in vitro wheat germ expression system

Target Details

Target:	OR6B2
Alternative Name:	OR6B2 (OR6B2 Products)
Background:	Full Gene Name: olfactory receptor, family 6, subfamily B, member 2 Synonyms: OR2-1,OR6B2P
Gene ID:	389090
NCBI Accession:	NM_001005853

Application Details

Application Notes:	Optimal working dilution should be determined by the investigator.
Comment:	Preparation method: in vitro, wheat germ expression system Product Quality tested by: 12.5% SDS-PAGE Stained with Coomassie Blue.
Restrictions:	For Research Use only

Handling

Buffer:	50 mM Tris-HCl, 10 mM reduced Glutathione, pH =8.0 in the elution buffer.
Handling Advice:	Aliquot to avoid repeated freezing and thawing.
Storage:	-80 °C
Storage Comment:	Best use within three months from the date of receipt of this protein.

Images

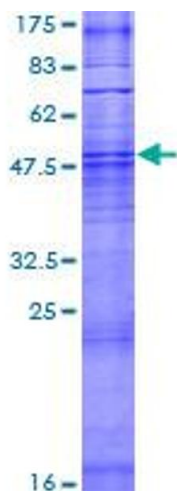


Image 1.