



[Go to Product page](#)

Datasheet for ABIN1313603

## OR6C3 Protein (AA 1-311) (GST tag)

### 1 Image

#### Overview

Quantity:	25 µg
Target:	OR6C3
Protein Characteristics:	AA 1-311
Origin:	Human
Source:	Wheat germ
Protein Type:	Recombinant
Purification tag / Conjugate:	This OR6C3 protein is labelled with GST tag.
Application:	ELISA, Western Blotting (WB), Affinity Purification (AP), Antibody Array (AA)

#### Product Details

Purpose:	OR6C3 (Human) Recombinant Protein (P01)
Sequence:	MNHTMVTEFV LLGLSDDPDL QIVIFLFLFI TYILSVTGNL TIITLTFVDS HLQTPMYFFL RNFSFLEISF TTVICIPRFLG AIITRNKTIS YNNCAAQLFF FIFMGVTEFY ILTAMSYDRY VAICKPLHYT SIMNRKLCTL LVLCAWLSGF LTIFPPLMLL LQLDYCASNV IDHFACDYFP LLQLSCSDTW LLEVIGFYFA LVTLFLTLAL VILSYMYIIR TILRIPSASQ RKKAFSTCSS HMIVISISYG SCIFMYANPS AKEKASLTKG IAILNTSVAP MLNPFYITLR NQQVKQAFKN VVHKVVVFYAN Q
Characteristics:	Human OR6C3 full-length ORF ( NP_473445.1, 1 a.a. - 311 a.a.) recombinant protein with GST-tag at N-terminal.
Purification:	in vitro wheat germ expression system

## Target Details

Target:	OR6C3
Alternative Name:	OR6C3 ( <a href="#">OR6C3 Products</a> )
Background:	Full Gene Name: olfactory receptor, family 6, subfamily C, member 3 Synonyms: OST709
Gene ID:	254786
NCBI Accession:	<a href="#">NM_054104</a>

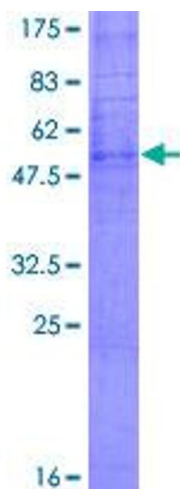
## Application Details

Application Notes:	Optimal working dilution should be determined by the investigator.
Comment:	Preparation method: in vitro, wheat germ expression system Product Quality tested by: 12.5% SDS-PAGE Stained with Coomassie Blue.
Restrictions:	For Research Use only

## Handling

Buffer:	50 mM Tris-HCl, 10 mM reduced Glutathione, pH =8.0 in the elution buffer.
Handling Advice:	Aliquot to avoid repeated freezing and thawing.
Storage:	-80 °C
Storage Comment:	Best use within three months from the date of receipt of this protein.

## Images



**Image 1.**