



[Go to Product page](#)

Datasheet for ABIN1313604
OR6C4 Protein (AA 1-309) (GST tag)

1 Image

Overview

Quantity:	25 µg
Target:	OR6C4
Protein Characteristics:	AA 1-309
Origin:	Human
Source:	Wheat germ
Protein Type:	Recombinant
Purification tag / Conjugate:	This OR6C4 protein is labelled with GST tag.
Application:	ELISA, Western Blotting (WB), Affinity Purification (AP), Antibody Array (AA)

Product Details

Purpose:	OR6C4 (Human) Recombinant Protein (P01)
Sequence:	MKNRTMFGEF ILLGLTNQPE LQVMIFILF LTYMLSILGN LTIITLTLTD PHLQTPMYFF LRNFSFLEIS FTSIFIPRFL TSMTTGNKVI SFAGCLTQYF FAIFLGATEF YLLASMSYDR YVAICKPLHY LTIMSSRVCI QLVFCSWLG GFLAILPPIIL MTQVDFCVSN ILNHYYCDYG PLVELACSDT SLLELMVILL AVVTLMVTLV LVTLSTYTYII RTILRIPSAQ QRTKAFSTCS SHMIVISLSY GSCMFMYINP SAKEGGAFNK GIAVLITSVT PLLNPFYITL RNQQVKQAFK DSVKKIVKL
Characteristics:	Human OR6C4 full-length ORF (NP_001005494.1, 1 a.a. - 309 a.a.) recombinant protein with GST-tag at N-terminal.
Purification:	in vitro wheat germ expression system

Target Details

Target:	OR6C4
Alternative Name:	OR6C4 (OR6C4 Products)
Background:	Full Gene Name: olfactory receptor, family 6, subfamily C, member 4 Synonyms: OR12-10
Gene ID:	341418
NCBI Accession:	NM_001005494

Application Details

Application Notes:	Optimal working dilution should be determined by the investigator.
Comment:	Preparation method: in vitro, wheat germ expression system Product Quality tested by: 12.5% SDS-PAGE Stained with Coomassie Blue.
Restrictions:	For Research Use only

Handling

Buffer:	50 mM Tris-HCl, 10 mM reduced Glutathione, pH =8.0 in the elution buffer.
Handling Advice:	Aliquot to avoid repeated freezing and thawing.
Storage:	-80 °C
Storage Comment:	Best use within three months from the date of receipt of this protein.

Images

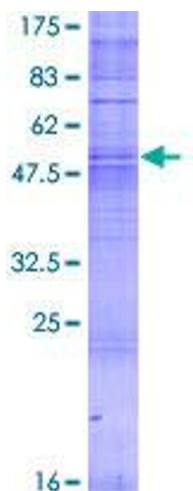


Image 1.