



[Go to Product page](#)

Datasheet for ABIN1313606

OR6C76 Protein (AA 1-312) (GST tag)

1 Image

Overview

Quantity:	25 µg
Target:	OR6C76
Protein Characteristics:	AA 1-312
Origin:	Human
Source:	Wheat germ
Protein Type:	Recombinant
Purification tag / Conjugate:	This OR6C76 protein is labelled with GST tag.
Application:	ELISA, Western Blotting (WB), Affinity Purification (AP), Antibody Array (AA)

Product Details

Purpose:	OR6C76 (Human) Recombinant Protein (P01)
Sequence:	MKNRTSVTDF ILLGLTDNPQ LQVVIFSFLF LTYVLSVTGN LTIISLTLTD SHLKTPMYFF LRNFSLEISF TSVCNPRFLI SILTGDKSIS YNACAAQLFF FIFLGSTEFF LLASMSYDCY VAICKPLHYT TIMSDRICYQ LISSWLAGF LVIFPPLAMG LQLDFCDSNV IDHFTCDSAP LLQISCTDTS TLELMSFILA LFTLISTLIL VILSYTYIIR TILRIPSAQQ RKKAFSTCSS HVIWVSISYG SCIFMYVKTS AKEGVALTKG VAILNTSVAP MLNPFYTLR NQQVKQAFKD VLRKISHKKK KH
Characteristics:	Human OR6C76 full-length ORF (NP_001005183.1, 1 a.a. - 312 a.a.) recombinant protein with GST-tag at N-terminal.
Purification:	in vitro wheat germ expression system

Target Details

Target:	OR6C76
Alternative Name:	OR6C76 (OR6C76 Products)
Background:	Full Gene Name: olfactory receptor, family 6, subfamily C, member 76 Synonyms:
Gene ID:	390326
NCBI Accession:	NM_001005183

Application Details

Application Notes:	Optimal working dilution should be determined by the investigator.
Comment:	Preparation method: in vitro, wheat germ expression system Product Quality tested by: 12.5% SDS-PAGE Stained with Coomassie Blue.
Restrictions:	For Research Use only

Handling

Buffer:	50 mM Tris-HCl, 10 mM reduced Glutathione, pH =8.0 in the elution buffer.
Handling Advice:	Aliquot to avoid repeated freezing and thawing.
Storage:	-80 °C
Storage Comment:	Best use within three months from the date of receipt of this protein.

Images

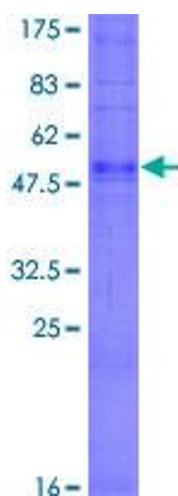


Image 1.