



[Go to Product page](#)

Datasheet for ABIN1313611

## OR6M1 Protein (AA 1-313) (GST tag)

### 1 Image

#### Overview

Quantity:	25 µg
Target:	OR6M1
Protein Characteristics:	AA 1-313
Origin:	Human
Source:	Wheat germ
Protein Type:	Recombinant
Purification tag / Conjugate:	This OR6M1 protein is labelled with GST tag.
Application:	ELISA, Western Blotting (WB), Affinity Purification (AP), Antibody Array (AA)

#### Product Details

Purpose:	OR6M1 (Human) Recombinant Protein (P01)
Sequence:	MGNWSTVTEI TLIAFPALLE IRISLFVVLV VTYTLTATGN ITIISLIWID HRLQTPMYFF LSNLSFLDIL YTTVITPKLL ACLLGEEKTI SFAGCMIQTY FYFFLGTVEF ILLAVMSFDR YMAICDPLHY TVIMNSRACL LLVLGCWVGA FLSVLFPTIV VTRLPYCRKE INHFFCDIAP LLQVACINTH LIEKINFLLS ALVILSSLAF TTGSYVYIIS TILRIPSTQG RQKAFSTCAS HITVVSIAHG SNIFVYVRPN QNSSLDYDKV AAVLITVVTP LLNPFYSLR NEKVQEVLR TVNRIMTLIQ RKT
Characteristics:	Human OR6M1 full-length ORF ( NP_001005325.1, 1 a.a. - 313 a.a.) recombinant protein with GST-tag at N-terminal.
Purification:	in vitro wheat germ expression system

## Target Details

Target:	OR6M1
Alternative Name:	OR6M1 ( <a href="#">OR6M1 Products</a> )
Background:	Full Gene Name: olfactory receptor, family 6, subfamily M, member 1 Synonyms: OR11-271
Gene ID:	390261
NCBI Accession:	<a href="#">NM_001005325</a>

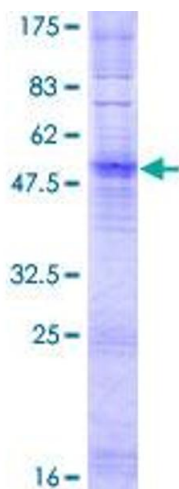
## Application Details

Application Notes:	Optimal working dilution should be determined by the investigator.
Comment:	Preparation method: in vitro, wheat germ expression system Product Quality tested by: 12.5% SDS-PAGE Stained with Coomassie Blue.
Restrictions:	For Research Use only

## Handling

Buffer:	50 mM Tris-HCl, 10 mM reduced Glutathione, pH =8.0 in the elution buffer.
Handling Advice:	Aliquot to avoid repeated freezing and thawing.
Storage:	-80 °C
Storage Comment:	Best use within three months from the date of receipt of this protein.

## Images



**Image 1.**