



[Go to Product page](#)

Datasheet for ABIN1313612

## OR6N1 Protein (AA 1-312) (GST tag)

### 1 Image

#### Overview

Quantity:	10 µg
Target:	OR6N1
Protein Characteristics:	AA 1-312
Origin:	Human
Source:	Wheat germ
Protein Type:	Recombinant
Purification tag / Conjugate:	This OR6N1 protein is labelled with GST tag.
Application:	ELISA, Western Blotting (WB), Affinity Purification (AP), Antibody Array (AA)

#### Product Details

Purpose:	OR6N1 (Human) Recombinant Protein (P01)
Sequence:	MDTGNWSQVA EFIIIGFPHL QGVQIYLFLL LLLIYLMTVL GNLLIFLVVC LDSRLHTPMY HFVSILSFSE LGYTAATIPK MLANLLSEKK TISFSGCLLQ IYFFHSLGAT ECYLLTAMAY DRYLAICRPL HYPTLMTPTL CAEIAIGCWL GGLAGPVVEI SLISRLPFCG PNRIQHVFC FPPVLSLACT DTSINVLVDF VINSCKILAT FLLILCSYVQ IICTVLRIPS AAGKRKAIST CASHFTVLLI FYGSILSMYV QLKKSYSLDY DQALAVVYSV LTPFLNPFYI SLRNKEIKEA VRRQLKRIGI LA
Characteristics:	Human OR6N1 full-length ORF ( NP_001005185.1, 1 a.a. - 312 a.a.) recombinant protein with GST-tag at N-terminal.
Purification:	in vitro wheat germ expression system

## Target Details

Target:	OR6N1
Alternative Name:	OR6N1 ( <a href="#">OR6N1 Products</a> )
Background:	Full Gene Name: olfactory receptor, family 6, subfamily N, member 1 Synonyms: OR1-22
Gene ID:	128372
NCBI Accession:	<a href="#">NM_001005185</a>

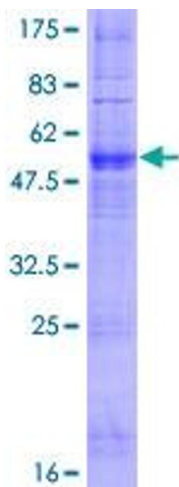
## Application Details

Application Notes:	Optimal working dilution should be determined by the investigator.
Comment:	Preparation method: in vitro, wheat germ expression system Product Quality tested by: 12.5% SDS-PAGE Stained with Coomassie Blue.
Restrictions:	For Research Use only

## Handling

Buffer:	50 mM Tris-HCl, 10 mM reduced Glutathione, pH =8.0 in the elution buffer.
Handling Advice:	Aliquot to avoid repeated freezing and thawing.
Storage:	-80 °C
Storage Comment:	Best use within three months from the date of receipt of this protein.

## Images



**Image 1.**