



[Go to Product page](#)

Datasheet for ABIN1313614

OR6N2 Protein (AA 1-317) (GST tag)

1 Image

Overview

Quantity:	25 µg
Target:	OR6N2
Protein Characteristics:	AA 1-317
Origin:	Human
Source:	Wheat germ
Protein Type:	Recombinant
Purification tag / Conjugate:	This OR6N2 protein is labelled with GST tag.
Application:	ELISA, Western Blotting (WB), Affinity Purification (AP), Antibody Array (AA)

Product Details

Purpose:	OR6N2 (Human) Recombinant Protein (P01)
Sequence:	MDQYNHSSLA EFVFLGFASV GYVRGWLFVL LLLAYLFTIC GNMLIFSVIR LDAALHTPMY HFVSVLSFLE LWYTATTIPK MLSNILSEKK TISFAGCLLQ TYFFHSLGAS ECYLLTAMAY DRYLAICRPL HYPIIMTTTL CAKMAAACWT CGFLCPISEV ILASQLPFCA YNEIQHIFCD FPPLLSLACK DTSANILVDF AINAFIILIT FFFIMISYAR IIGAVLKIKT ASGRKKAFST CASHLAVVLI FFGSIIIFYV RLKKSYSLTL DRTLAIYYSV LTPMVNPIY SLRNKEIKA IKRTIFQKGD KASLAHL
Characteristics:	Human OR6N2 full-length ORF (NP_001005278.1, 1 a.a. - 317 a.a.) recombinant protein with GST-tag at N-terminal.
Purification:	in vitro wheat germ expression system

Target Details

Target:	OR6N2
Alternative Name:	OR6N2 (OR6N2 Products)
Background:	Full Gene Name: olfactory receptor, family 6, subfamily N, member 2 Synonyms: OR1-23
Gene ID:	81442
NCBI Accession:	NM_001005278

Application Details

Application Notes:	Optimal working dilution should be determined by the investigator.
Comment:	Preparation method: in vitro, wheat germ expression system Product Quality tested by: 12.5% SDS-PAGE Stained with Coomassie Blue.
Restrictions:	For Research Use only

Handling

Buffer:	50 mM Tris-HCl, 10 mM reduced Glutathione, pH =8.0 in the elution buffer.
Handling Advice:	Aliquot to avoid repeated freezing and thawing.
Storage:	-80 °C
Storage Comment:	Best use within three months from the date of receipt of this protein.

Images

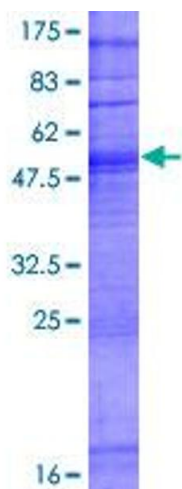


Image 1.