

Datasheet for ABIN1313632

**Olfactory Receptor, Family 8, Subfamily D, Member 2 (OR8D2)  
(AA 1-311) protein (GST tag)**[Go to Product page](#)**1** Image

## Overview

Quantity:	25 µg
Target:	Olfactory Receptor, Family 8, Subfamily D, Member 2 (OR8D2)
Protein Characteristics:	AA 1-311
Origin:	Human
Source:	Wheat germ
Protein Type:	Recombinant
Purification tag / Conjugate:	GST tag
Application:	ELISA, Western Blotting (WB), Affinity Purification (AP), Antibody Array (AA)

## Product Details

Purpose:	OR8D2 (Human) Recombinant Protein (P01)
Sequence:	MATSNHSSGA EFILAGLTQR PELQLPLFLL FLGIYVVTVV GNLGMIFLIA LSSQLYPPVY YFLSHLSFID LCYSSVITPK MLVNFVPEEN IISFLECITQ LYFFLIFVIA EGYLLTAMEY DRYVAICRPL LYNIVMSHRV CSIMMAVVYS LGFLWATVHT TRMSVLSFCR SHTVSHYFCD ILPLLTLSCS STHINEILLF IIGGVNTLAT TLAVLISYAF IFSSILGIHS TEGQSKAFGT CSSHLLAVGI FFGSITFMYF KPPSSTTMEK EKVSSVFYIT IIPMLNPLIY SLRNKDVKNA LKKMTRGRQS S
Characteristics:	Human OR8D2 full-length ORF ( NP_001002918.1, 1 a.a. - 311 a.a.) recombinant protein with GST-tag at N-terminal.
Purification:	in vitro wheat germ expression system

Target Details

Target:	Olfactory Receptor, Family 8, Subfamily D, Member 2 (OR8D2)
Alternative Name:	OR8D2 ( <a href="#">OR8D2 Products</a> )
Background:	Full Gene Name: olfactory receptor, family 8, subfamily D, member 2 Synonyms: JCG2
Gene ID:	283160
NCBI Accession:	<a href="#">NM_001002918</a>

Application Details

Application Notes:	Optimal working dilution should be determined by the investigator.
Comment:	Preparation method: in vitro, wheat germ expression system Product Quality tested by: 12.5% SDS-PAGE Stained with Coomassie Blue.
Restrictions:	For Research Use only

Handling

Buffer:	50 mM Tris-HCl, 10 mM reduced Glutathione, pH =8.0 in the elution buffer.
Handling Advice:	Aliquot to avoid repeated freezing and thawing.
Storage:	-80 °C
Storage Comment:	Best use within three months from the date of receipt of this protein.

Images

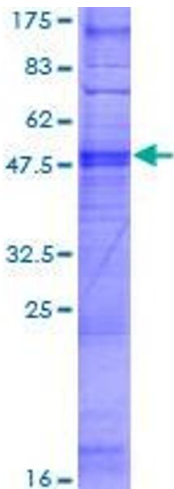


Image 1.