



[Go to Product page](#)

Datasheet for ABIN1313636

## OR8H2 Protein (AA 1-312) (GST tag)

### 1 Image

#### Overview

Quantity:	25 µg
Target:	OR8H2
Protein Characteristics:	AA 1-312
Origin:	Human
Source:	Wheat germ
Protein Type:	Recombinant
Purification tag / Conjugate:	This OR8H2 protein is labelled with GST tag.
Application:	ELISA, Western Blotting (WB), Affinity Purification (AP), Antibody Array (AA)

#### Product Details

Purpose:	OR8H2 (Human) Recombinant Protein (P01)
Sequence:	MMGRRNNTNV ADFILMGLTL SEEIQMALFM LFLLIYLITM LGNVGMILII RLDLQLHTPM YFFLTHLSFI DLSYSTVVTP KTLANLLTSN YISFTGCFAQ MFFFAFLGTA ECYLLSSMAH DRYAAICSPH HYTVIMSKRL CLALITGPYV IGFIDSFVNV VSMSRLHFYD SNVIHHFFCD TSPILALSCT DTYNTEILIF IIVGSTLMVS LFTISASYVF ILFTILKINS TSGKQKAFST CVSHLLGVTI FYSTLIFTYL KPRKSYSLGR DQVASVFYTI VIPVLNPLIY SLRNKEVKNA VIRVMQRRQD SR
Characteristics:	Human OR8H2 full-length ORF ( NP_001005200.1, 1 a.a. - 312 a.a.) recombinant protein with GST-tag at N-terminal.
Purification:	in vitro wheat germ expression system

## Target Details

Target:	OR8H2
Alternative Name:	OR8H2 ( <a href="#">OR8H2 Products</a> )
Background:	Full Gene Name: olfactory receptor, family 8, subfamily H, member 2 Synonyms: OR11-171
Gene ID:	390151
NCBI Accession:	<a href="#">NM_001005200</a>

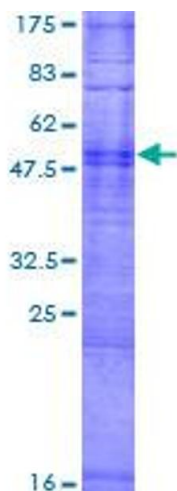
## Application Details

Application Notes:	Optimal working dilution should be determined by the investigator.
Comment:	Preparation method: in vitro, wheat germ expression system Product Quality tested by: 12.5% SDS-PAGE Stained with Coomassie Blue.
Restrictions:	For Research Use only

## Handling

Buffer:	50 mM Tris-HCl, 10 mM reduced Glutathione, pH =8.0 in the elution buffer.
Handling Advice:	Aliquot to avoid repeated freezing and thawing.
Storage:	-80 °C
Storage Comment:	Best use within three months from the date of receipt of this protein.

## Images



**Image 1.**