



[Go to Product page](#)

Datasheet for ABIN1313709

## OSGIN1 Protein (AA 1-477) (GST tag)

### 1 Image

#### Overview

Quantity:	10 µg
Target:	OSGIN1
Protein Characteristics:	AA 1-477
Origin:	Human
Source:	Wheat germ
Protein Type:	Recombinant
Purification tag / Conjugate:	This OSGIN1 protein is labelled with GST tag.
Application:	Western Blotting (WB), ELISA, Affinity Purification (AP), Antibody Array (AA)

#### Product Details

Purpose:	OKL38 (Human) Recombinant Protein (P01)
Sequence:	MSSSRKDHLG ASSSEPLPVI IVGNPGSGIC LSYLLSGYTP YTKPDAIHPH PLLQRKLTEA PGVSILDQDL DYLSEGLEGR SQSPVALLFD ALLRPDTDFG GNMKSVLTWK HRKEHAIPHV VLGRNLPGGA WHSIEGSMVI LSQGQWMGLP DLEVKDWMQK KRRGLRNSRA TAGDIAHYR DYVVKKGLGH NFVSGAVVTA VEWGTPDPSS CGAQDSSPLF QVSGFLTRNQ AQQPFSLWAR NVVLATGTFD SPARLGIPGE ALPFIHHELS ALEAATRVGA VTPASDPVLI IGAGLSAADA VLYARHYNIP VIHAFRRAVD DPGLVFNQLP KMLYPEYHKV HQMMREQSIL SPSPYEGYRS LPRHQLLCFK EDCQAVFQDL EGVEKVFVGS LVLVLIGSHP DLSFLPGAGA DFAVDPDQPL SAKRNPIDVD PFTYQSTRQE GLYAMGPLAG DNFVRFVQGG ALAVASSLLR KETRKPP
Characteristics:	Human OKL38 full-length ORF ( NP_892025.1, 1 a.a. - 477 a.a.) recombinant protein with GST-tag at N-terminal.

## Product Details

---

Purification: in vitro wheat germ expression system

## Target Details

---

Target: OSGIN1

Alternative Name: OSGIN1 ([OSGIN1 Products](#))

Background: Full Gene Name: oxidative stress induced growth inhibitor 1  
Synonyms: BDGI,OKL38

Gene ID: 29948

NCBI Accession: [NM\\_182980](#)

## Application Details

---

Application Notes: Optimal working dilution should be determined by the investigator.

Comment: Preparation method: in vitro, wheat germ expression system  
Product Quality tested by: 12.5% SDS-PAGE Stained with Coomassie Blue.

Restrictions: For Research Use only

## Handling

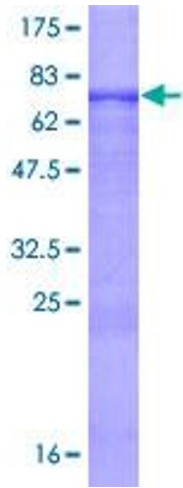
---

Buffer: 50 mM Tris-HCl, 10 mM reduced Glutathione, pH =8.0 in the elution buffer.

Handling Advice: Aliquot to avoid repeated freezing and thawing.

Storage: -80 °C

Storage Comment: Best use within three months from the date of receipt of this protein.



**Image 1.**