

Datasheet for ABIN1313715  
**OSGIN2 Protein (AA 398-505) (GST tag)**



[Go to Product page](#)

1 Image

Overview

Quantity:	10 µg
Target:	OSGIN2
Protein Characteristics:	AA 398-505
Origin:	Human
Source:	Wheat germ
Protein Type:	Recombinant
Purification tag / Conjugate:	This OSGIN2 protein is labelled with GST tag.
Application:	ELISA, Western Blotting (WB), Affinity Purification (AP), Antibody Array (AA)

Product Details

Purpose:	C8orf1 (Human) Recombinant Protein (Q01)
Sequence:	SGLKKIFKLS AAWVLIGSHP NLSFLKDQGC YLGHKSSQPI TCKGNPVEID TYTYECIKEA NLFALGPLVG DNFVRFLKGG ALGVTRCLAT RQKKKHLFVE RGGGDGIA
Characteristics:	Human C8orf1 partial ORF ( AAH31054, 398 a.a. - 505 a.a.) recombinant protein with GST-tag at N-terminal.
Purification:	in vitro wheat germ expression system

Target Details

Target:	OSGIN2
Alternative Name:	OSGIN2 ( <a href="#">OSGIN2 Products</a> )

## Target Details

---

Background: Gene: oxidative stress induced growth inhibitor family member 2  
Synonyms: C8orf1, hT41

---

Gene ID: 734

---

## Application Details

---

Application Notes: Optimal working dilution should be determined by the investigator.

---

Restrictions: For Research Use only

---

## Handling

---

Buffer: 50 mM Tris-HCl, 10 mM reduced Glutathione, pH =8.0 in the elution buffer.

---

Handling Advice: Aliquot to avoid repeated freezing and thawing.

---

Storage: -80 °C

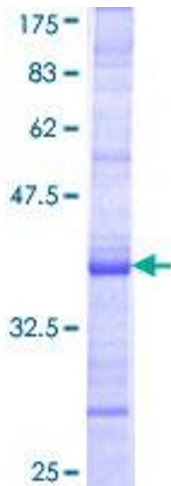
---

Storage Comment: Best use within three months from the date of receipt of this protein.

---

## Images

---



**Image 1.**