



[Go to Product page](#)

Datasheet for ABIN1313725

OST alpha Protein (AA 1-340) (GST tag)

1 Image

Overview

Quantity:	25 µg
Target:	OST alpha (OSTALPHA)
Protein Characteristics:	AA 1-340
Origin:	Human
Source:	Wheat germ
Protein Type:	Recombinant
Purification tag / Conjugate:	This OST alpha protein is labelled with GST tag.
Application:	Western Blotting (WB), ELISA, Affinity Purification (AP), Antibody Array (AA)

Product Details

Purpose:	OSTalpha (Human) Recombinant Protein (P01)
Sequence:	MEPGRTQIKL DPRYTADLLE VLKTNYGIPS ACFSQPPTAA QLLRALGPVE LALTSILTLL ALGSIAIFLE DAVVLYKNTL CPIKRRTLLW KSSAPTVVSV LCCFGLWIPR SLVLVEMTIT SFYAVCFYLL MLVMVEGFGG KEAVLRTL RD TPMMVHTGPC CCCCPCCPRL LLTRKKLQLL MLGPFQYAFI KITLTLVGLF LVPDGIYDPA DISEGSTALW INTFLGVSTL LALWTLGIIS RQARLHLGEQ NMGAKFALFQ VLLILTALQP SIFSVLANGG QIACSPPYSS KTRSQVMNCH LLILETFLMT VLTRMYRKRK DHKVGYETFS SPDLDLNLKA
Characteristics:	Human OSTalpha full-length ORF (NP_689885.3, 1 a.a. - 340 a.a.) recombinant protein with GST-tag at N-terminal.
Purification:	in vitro wheat germ expression system

Target Details

Target:	OST alpha (OSTALPHA)
Alternative Name:	OSTalpha (OSTALPHA Products)
Background:	Full Gene Name: organic solute transporter alpha Synonyms: MGC39807,OSTA
Gene ID:	200931
NCBI Accession:	NM_152672

Application Details

Application Notes:	Optimal working dilution should be determined by the investigator.
Comment:	Preparation method: in vitro, wheat germ expression system Product Quality tested by: 12.5% SDS-PAGE Stained with Coomassie Blue.
Restrictions:	For Research Use only

Handling

Buffer:	50 mM Tris-HCl, 10 mM reduced Glutathione, pH =8.0 in the elution buffer.
Handling Advice:	Aliquot to avoid repeated freezing and thawing.
Storage:	-80 °C
Storage Comment:	Best use within three months from the date of receipt of this protein.

Images

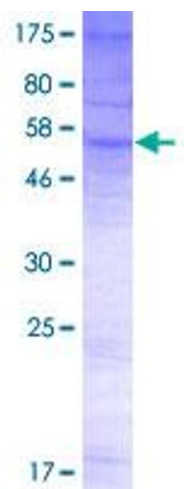


Image 1.