



[Go to Product page](#)

Datasheet for ABIN1313734

Otoferlin Protein (OTOF) (AA 1-98) (GST tag)

1 Image

Overview

Quantity:	10 µg
Target:	Otoferlin (OTOF)
Protein Characteristics:	AA 1-98
Origin:	Human
Source:	Wheat germ
Protein Type:	Recombinant
Purification tag / Conjugate:	This Otoferlin protein is labelled with GST tag.
Application:	Affinity Purification (AP), Antibody Array (AA), ELISA, Western Blotting (WB)

Product Details

Purpose:	OTOF (Human) Recombinant Protein (Q01)
Sequence:	MALLIHLKTV SELRGRGDRI AKVTFRGQSF YSRVLENCED VADFDETFRW PVASSIDRNE MLEIQVFNYS KVFSNKLIGT FRMVLQKVVE ESHVEVTD
Characteristics:	Human OTOF partial ORF (NP_919224.1, 1 a.a. - 98 a.a.) recombinant protein with GST-tag at N-terminal.
Purification:	in vitro wheat germ expression system

Target Details

Target:	Otoferlin (OTOF)
Alternative Name:	OTOF (OTOF Products)

Target Details

Background: Full Gene Name: otoferlin
Synonyms: DFNB6,DFNB9,FER1L2,NSRD9

Gene ID: 9381

NCBI Accession: [NM_194248](#)

Pathways: [Sensory Perception of Sound](#), [Synaptic Vesicle Exocytosis](#)

Application Details

Application Notes: Optimal working dilution should be determined by the investigator.

Comment: Preparation method: in vitro, wheat germ expression system
Product Quality tested by: 12.5% SDS-PAGE Stained with Coomassie Blue.

Restrictions: For Research Use only

Handling

Buffer: 50 mM Tris-HCl, 10 mM reduced Glutathione, pH =8.0 in the elution buffer.

Handling Advice: Aliquot to avoid repeated freezing and thawing.

Storage: -80 °C

Storage Comment: Best use within three months from the date of receipt of this protein.

Images

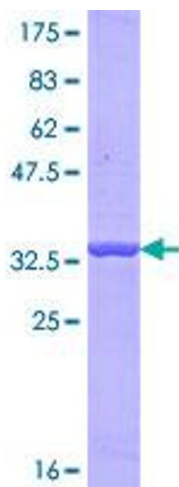


Image 1.