

Datasheet for ABIN1313738

**Otopetrin 2 Protein (OTOP2) (AA 1-562) (GST tag)**[Go to Product page](#)

## 1 Image

## Overview

Quantity:	10 µg
Target:	Otopetrin 2 (OTOP2)
Protein Characteristics:	AA 1-562
Origin:	Human
Source:	Wheat germ
Protein Type:	Recombinant
Purification tag / Conjugate:	This Otopetrin 2 protein is labelled with GST tag.
Application:	ELISA, Western Blotting (WB), Affinity Purification (AP), Antibody Array (AA)

## Product Details

Purpose:	OTOP2 (Human) Recombinant Protein (P01)
Sequence:	MSEELAQGPK ESPPAPRAGP REVWKKGGRL LSVLLAVNVLL LACTLISGG AFNKVAVYDT DVFALLTAMM LLATLWILFY LLRTVRCPCA VPYRDAHAGP IWLRGGLVLF GICTLIMDVF KTGYSSFFE CQSAIKILHP LIQAVFVIQ TYFLWVSAKD CVHVHLDLTW CGLMFTLTNN LAIWMAAVVD ESVHQSHSYS SSSHNASHAR LISDQHADNP VGGDSCLCST AVCQIFQQGY FYLYPFNIEY SLFASTMLYV MWKNVGRFLA STPGHSHTPT PVSLFRETFF AGPVLGLLLLF VVGLAVFIIY EVQVSGDGSR TRQALVIYYS FNIVCLGLTT LVSLSGSIY RFDRRAMDHH KNPTRTL DVA LLMGAALGQY AISYYSIVAV VAGTPQDLLA GLNLTHALLM IAQHTFQNMF IIESLHRGPP GAEPHSTHPK EPCQDLTFTN LDALHTLSAC PPNPGLVSPS PSDQREAVAI VSTPRSQRWR QCLKDISLFL LLCNVILWIM PAFGARPHFS NTVEVDFYGY SLWAVIVNIC LPFGIFYRMH AVSSLLEVYV LS
Characteristics:	Human OTOP2 full-length ORF ( AAI52987.1, 1 a.a. - 562 a.a.) recombinant protein with GST-tag

## Product Details

---

at N-terminal.

Purification: in vitro wheat germ expression system

## Target Details

---

Target: Otopetrin 2 (OTOP2)

Alternative Name: OTOP2 ([OTOP2 Products](#))

Background: Full Gene Name: otopetrin 2  
Synonyms:

Gene ID: 92736

## Application Details

---

Application Notes: Optimal working dilution should be determined by the investigator.

Comment: Preparation method: in vitro, wheat germ expression system  
Product Quality tested by: 12.5% SDS-PAGE Stained with Coomassie Blue.

Restrictions: For Research Use only

## Handling

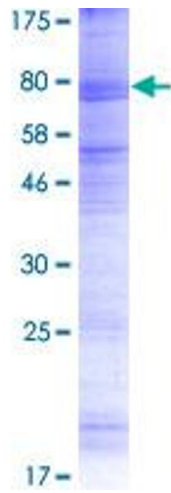
---

Buffer: 50 mM Tris-HCl, 10 mM reduced Glutathione, pH =8.0 in the elution buffer.

Handling Advice: Aliquot to avoid repeated freezing and thawing.

Storage: -80 °C

Storage Comment: Best use within three months from the date of receipt of this protein.



**Image 1.**