



[Go to Product page](#)

Datasheet for ABIN1313740

## Otopetrin 2 Protein (OTOP2) (AA 423-493) (GST tag)

### 1 Image

#### Overview

Quantity:	10 µg
Target:	Otopetrin 2 (OTOP2)
Protein Characteristics:	AA 423-493
Origin:	Human
Source:	Wheat germ
Protein Type:	Recombinant
Purification tag / Conjugate:	This Otopetrin 2 protein is labelled with GST tag.
Application:	ELISA, Western Blotting (WB), Affinity Purification (AP), Antibody Array (AA)

#### Product Details

Purpose:	OTOP2 (Human) Recombinant Protein (Q01)
Sequence:	ESLHRGPPGA EPHSTHPKEP CQDLTFTNLD ALHTLSACPP NPGLVSPSPS DQREAVAIVS TPRSQWRRQC L
Characteristics:	Human OTOP2 partial ORF ( NP_835454, 423 a.a. - 493 a.a.) recombinant protein with GST-tag at N-terminal.
Purification:	in vitro wheat germ expression system

#### Target Details

Target:	Otopetrin 2 (OTOP2)
Alternative Name:	OTOP2 ( <a href="#">OTOP2 Products</a> )

## Target Details

Background: Full Gene Name: otopetrin 2  
Synonyms:

Gene ID: 92736

NCBI Accession: [NM\\_178160](#)

## Application Details

Application Notes: Optimal working dilution should be determined by the investigator.

Comment: Preparation method: in vitro, wheat germ expression system  
Product Quality tested by: 12.5% SDS-PAGE Stained with Coomassie Blue.

Restrictions: For Research Use only

## Handling

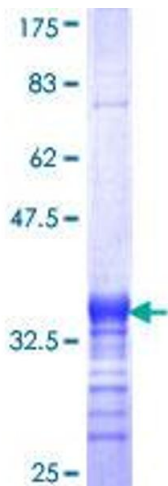
Buffer: 50 mM Tris-HCl, 10 mM reduced Glutathione, pH =8.0 in the elution buffer.

Handling Advice: Aliquot to avoid repeated freezing and thawing.

Storage: -80 °C

Storage Comment: Best use within three months from the date of receipt of this protein.

## Images



**Image 1.**